



TROUSERS

TROUSER CUT

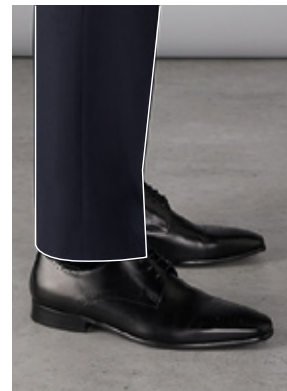


TAILORED
Classic Cut



SLIM CUT
Slimmer in the Thigh. Best used in conjunction with a narrow Bottom width i.e. 15", 16" & 17" Bottoms

SHAPE AND HEM



PLAIN BOTTOMS
with Kick Tape



TURN UPS
Standard is 1 1/2" Depth
1" to 3" in 1/2" Variable
Options *with Kick Tape*



**WEST POINT
ANGLED HEM**
with Kick Tape on front only

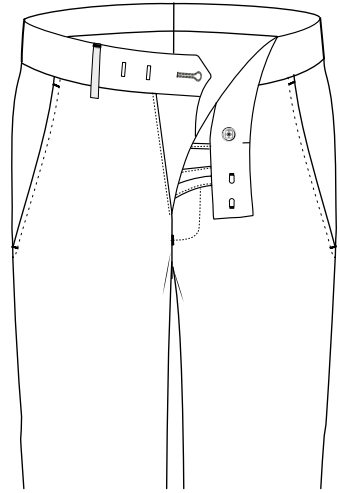


V CUT OR SLIT CUT HEM

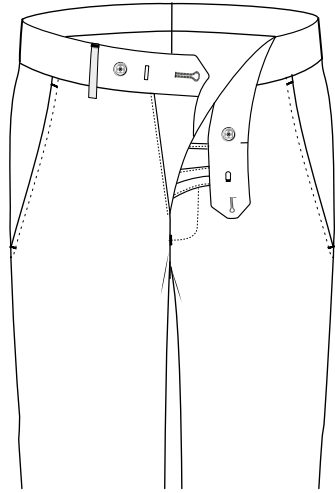
UNFINISHED BOTTOMS

If requested, this will be 4" longer than the outside leg stated.

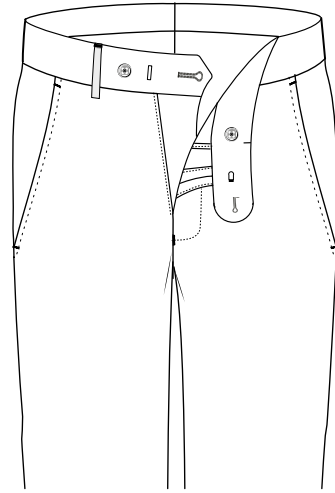
WAISTBAND STYLES



Square Extension
Hook & Bar

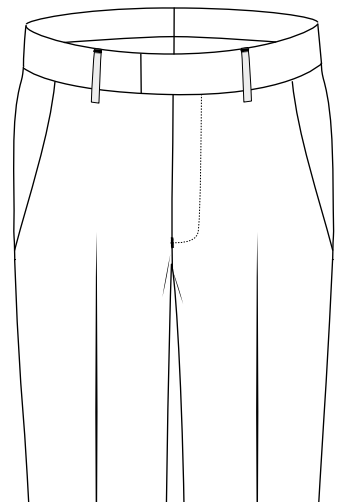


Pointed Extension
Hole & Button

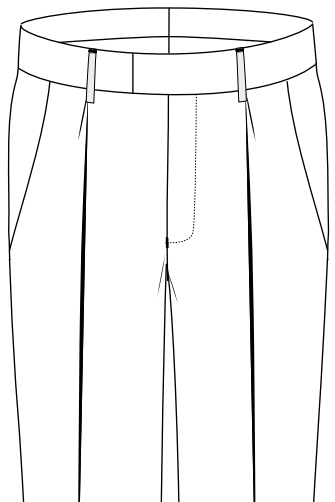


Rounded Extension
Hole & Button

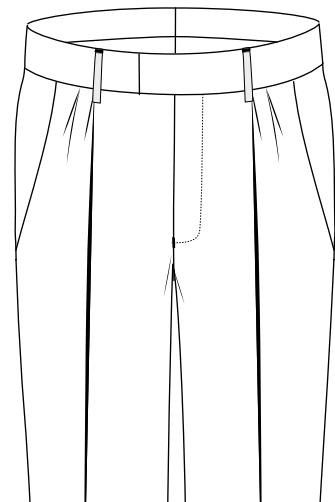
TROUSER FRONTS



Plain Fronts



Single Reverse Pleat
(Option Forward Pleat)



Double Reverse Pleats
(Option Forward Pleats)

WAISTBAND FEATURES



Plain Waistband
(No Loops)



Belt Loops



Tunnel Loops



Twin Loops



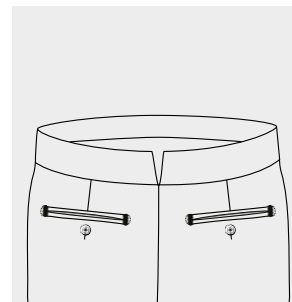
Pointed Strap & Buckle
with overlapping adjuster



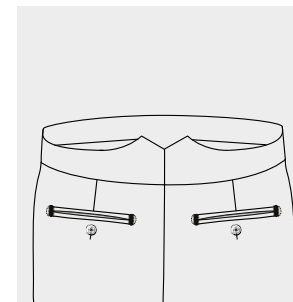
Tab & Button Elastic
Side Adjusters



Strap & Buckle
Adjusters into waistband



V Cut Back



Peak Back Waistband



Internal Brace Buttons
(Option External Brace Buttons)



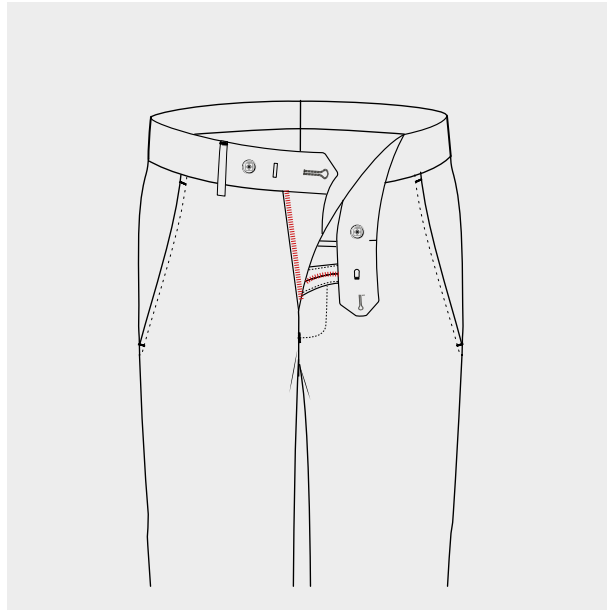
Belt Prong



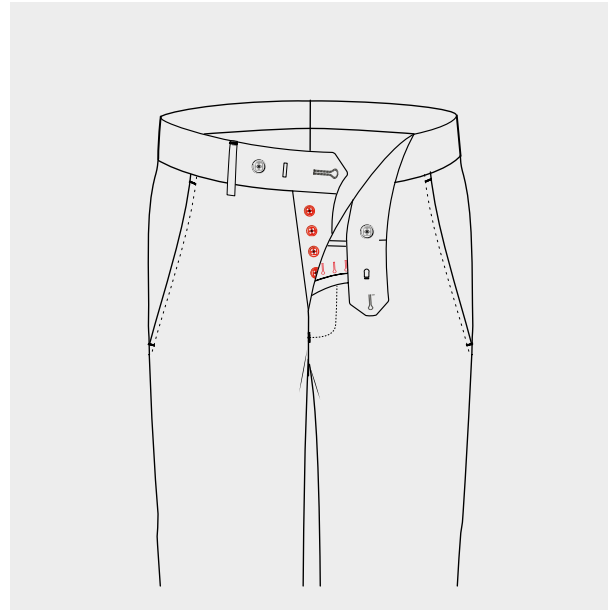
WAISTBAND TRIM

Picture shows Cream Curtain Waistband with Shirt Grip. Black curtain waistband with shirt grip and black herringbone trim is standard.

FLY OPTIONS

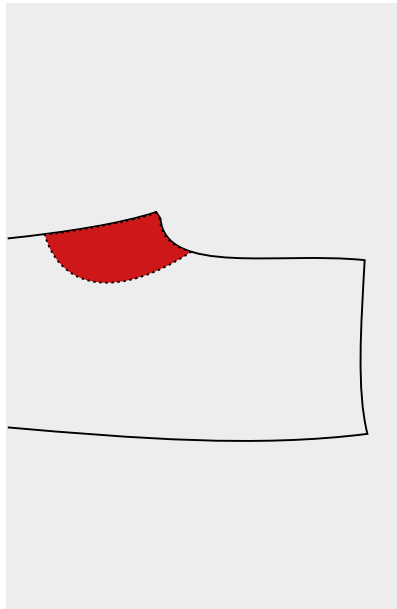


Zip Fly
Option Metal Zip Fly

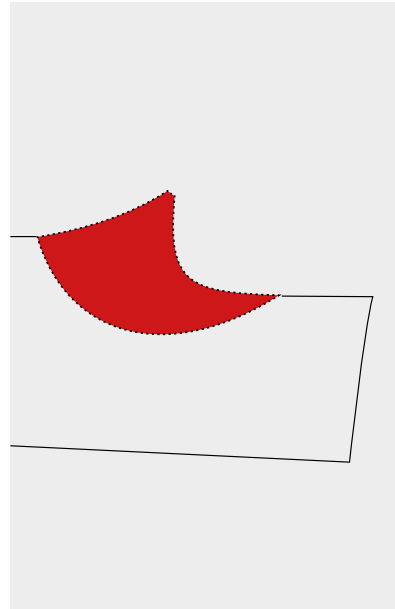


Button Fly

INTERNAL

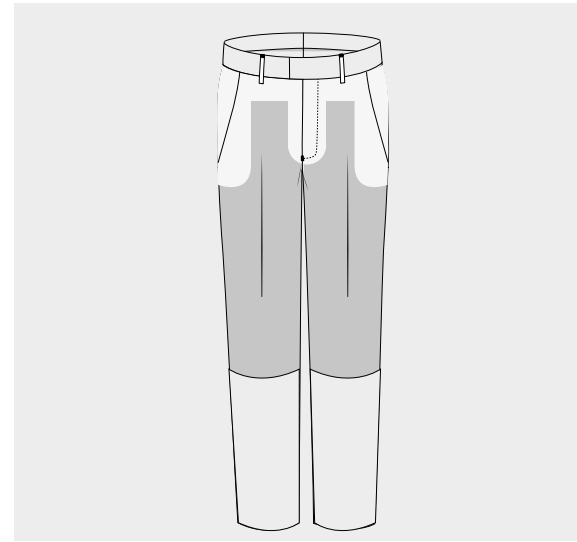


Double Crotch
Additional fabric positioned as above

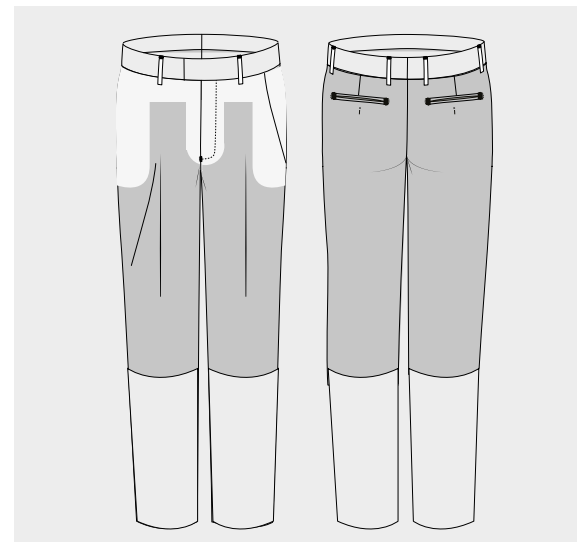


Double Seat
Additional fabric positioned as above

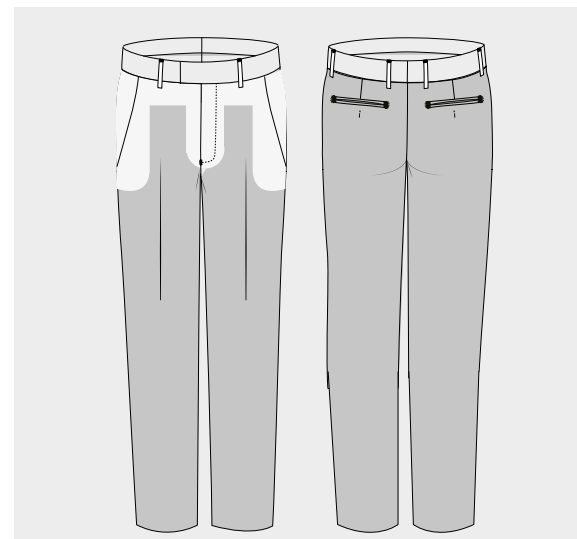
LEG LININGS



Half Lined Front Only
(Standard Option)



Half Lined Front & Back



Fully Lined Front & Back

SIDE POCKETS



Slant Side Pocket



Straight Side Pocket



Vertical Jetted Side Pocket



Right Side Internal Coin Pocket



Dropped Welted
Cross Pocket
Plain Front Only



Full Cross
Side Pocket
Plain Fronts Only

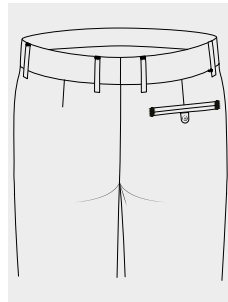


Frog Mouth
Side Pocket
Plain Fronts Only

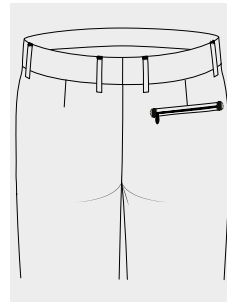
BACK POCKETS



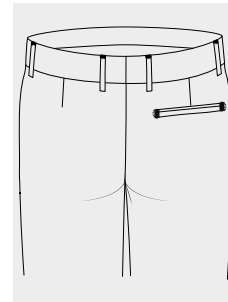
1 Right Hip Pocket
Hole & Button



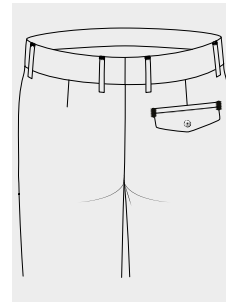
1 Right Hip Pocket
Tab & Button



1 Right Hip Jetted
Pocket with a zip



1 Right Hip Pocket
Welted



1 Right Hip Pocket Flap
with or without Button

All the above back pockets can be switched to the left hand side or pockets can be placed on both sides

CASH POCKETS



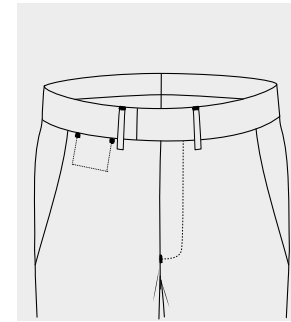
Right side pocket with
flap plus button



Right side pocket jetted

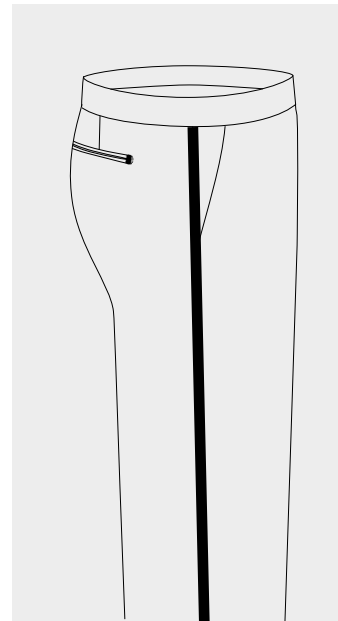


Right side pocket with
Flap & Button

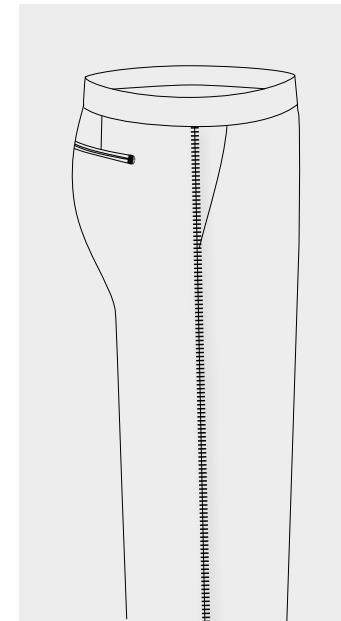


Right side internal pocket also
available with a zip option

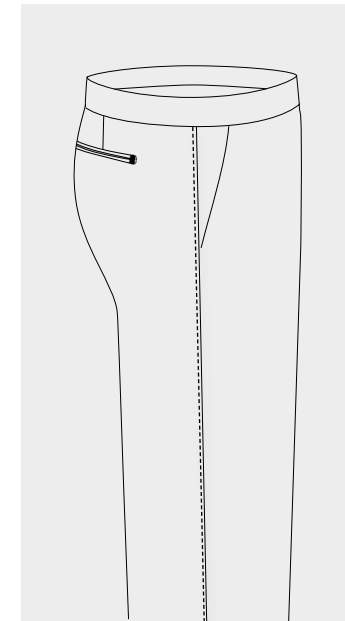
SIDE SEAMS



Satin Stripe



Satin Braid



Raised Side Seam