

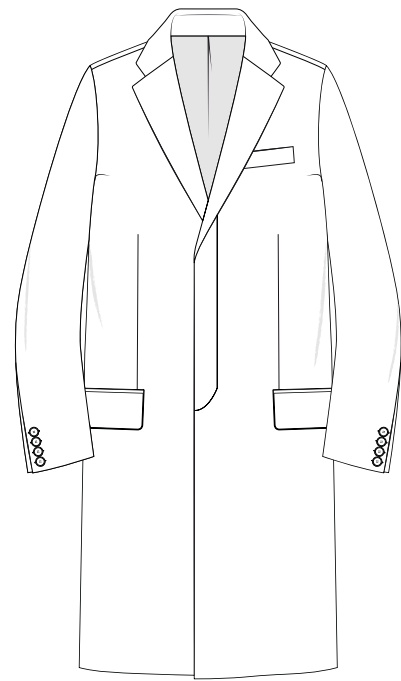


## OVERCOATS

Choose from a range of classic styles from Morning Coats to Frock Coats to Overcoats

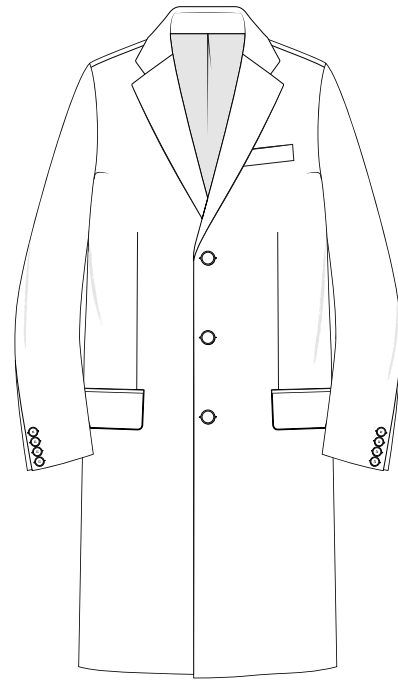
Our coats honour tradition, with tailoring that will stay fashionable for years to come. These pieces embody style, elegance, and sophistication.

# OVERCOATS STYLES



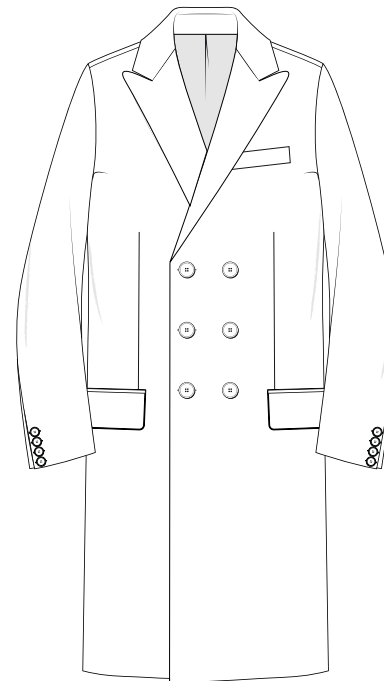
STYLE 722  
Button 3 Fly Front

- Single Breasted
- Button 3
- Fly Front
- Notch Lapels
- Set in Sleeves
- Out Breast Welt Pocket
- Centre Vent Back



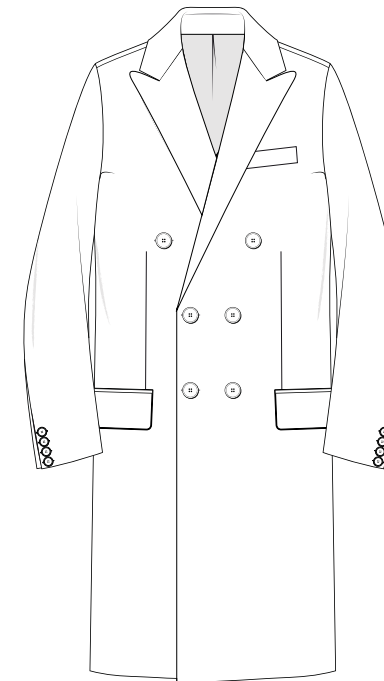
STYLE 723  
Button 3

- Single Breasted
- Button 3
- Notch Lapels
- Set in Sleeves
- Out Breast Welt Pocket
- Centre Vent Back



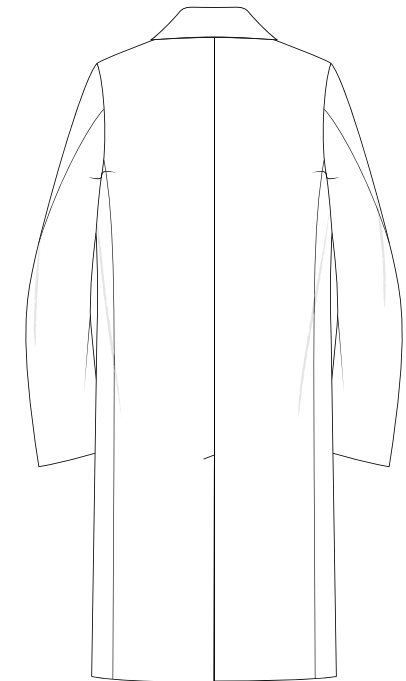
STYLE 726  
Double Breasted  
Button 3 show 3

- Double Breasted
- Button 3 Show 3
- Peak Lapels
- Set in Sleeves
- Out Breast Welt Pocket
- Centre Vent Back



STYLE 728  
Double Breasted  
Button 2 show 3

- Double Breasted
- Button 2 Show 3
- Peak Lapels
- Set in Sleeves
- Out Breast Welt Pocket
- Centre Vent Back



Centre Vent Back  
for all Overcoat Styles

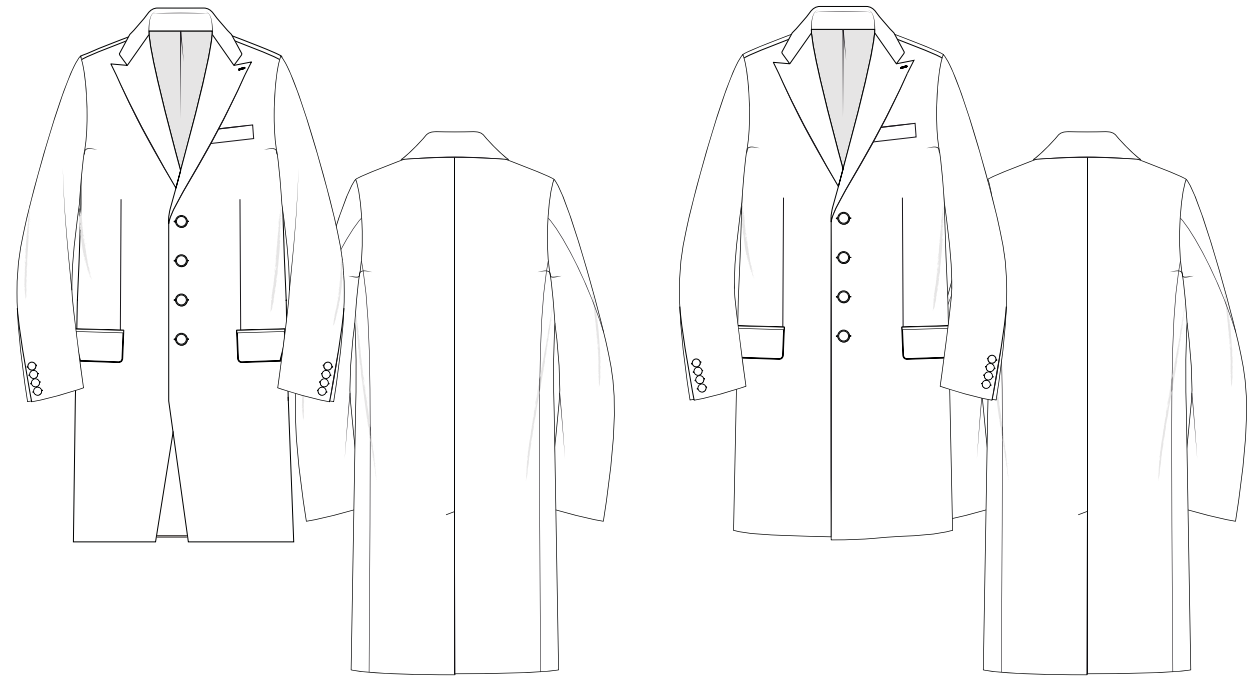
SPECIAL OCCASION  
FROCK COAT



FROCK COAT  
Style 254

Single Breasted	Cloth Buttons
Button 3 Frock Coat	Standard Pattern Length 38"
Straight Facing Only	Recommended (+/- 3") Only
Wide Notch Lapels	Blade Seam Back with Hook Vent to Button 2
Out Breast Welt Pocket	

SPECIAL OCCASION  
PRINCE EDWARD LONG COAT STYLES



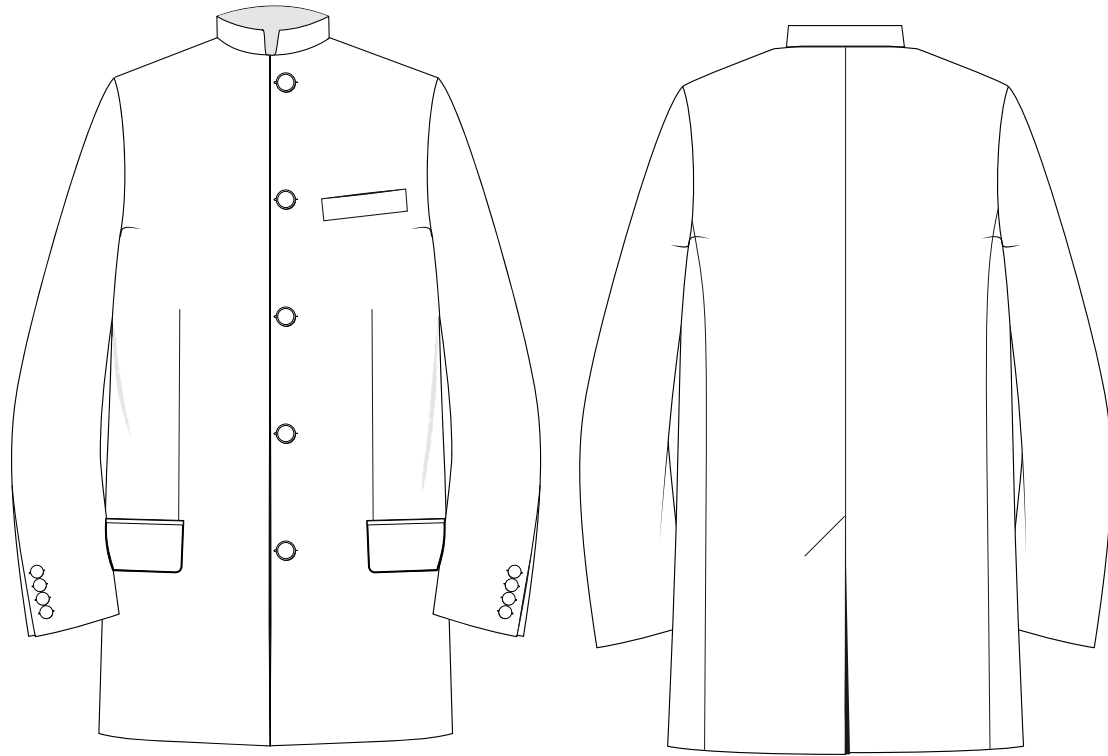
PRINCE EDWARD LONG COAT  
Style 257

Cut Back Fronts	Out Breast Welt Pocket
Single Breasted	Cloth Buttons
Button 4 Frock Coat	Standard Pattern Length 35"
Straight Facing Only	Recommended (+/- 3") Only
Cut Back Fronts	Centre Vent Only
New Semi Peak Lapels	

PRINCE EDWARD LONG COAT  
Style 258

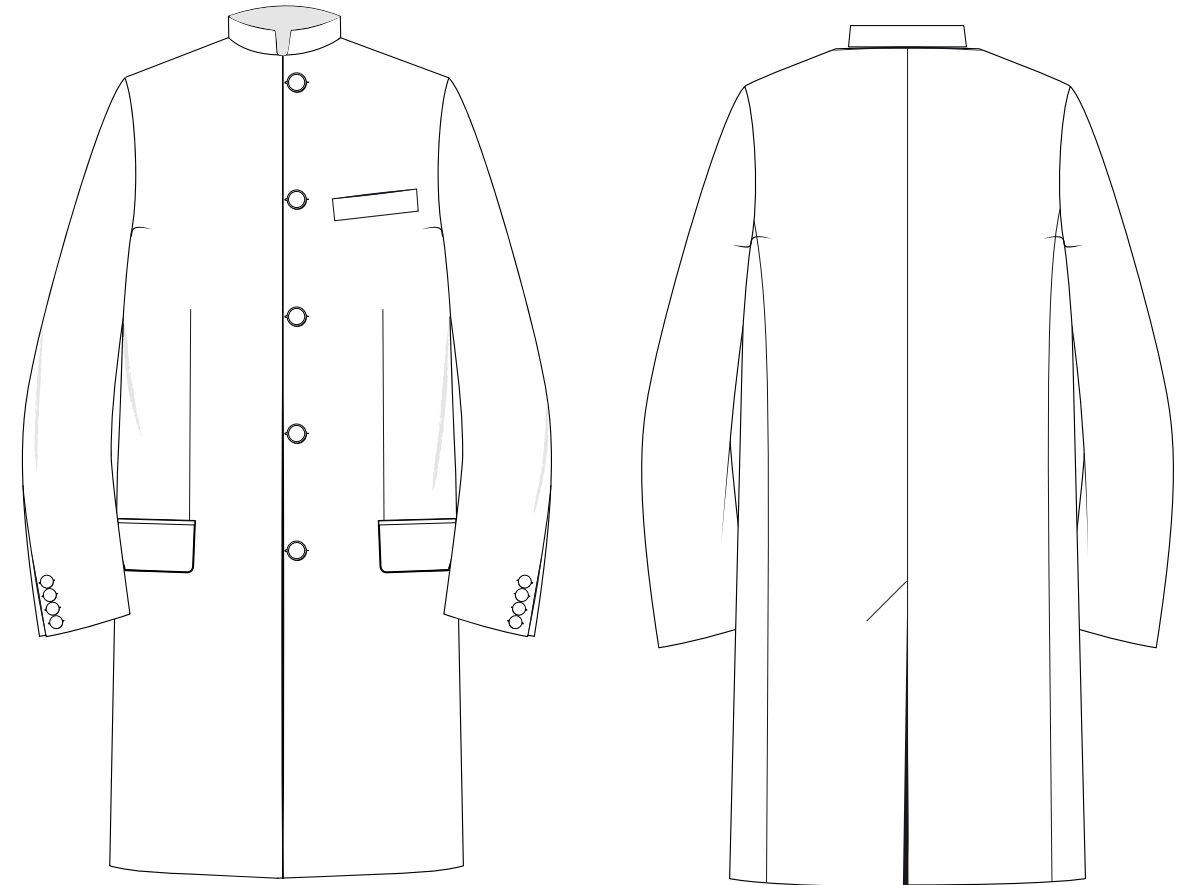
Square Cut Fronts	New Semi Peak Lapels
Single Breasted	Out Breast Welt Pocket
Button 4 Frock Coat	Cloth Buttons
Straight Facing Only	Standard Pattern Length 35"
Square Fronts	Recommended (+/- 3") Only
	Centre Vent Only

SPECIAL OCCASION  
NEHRU COLLAR COATS



NEHRU STAND COLLAR JACKET  
STYLE 47

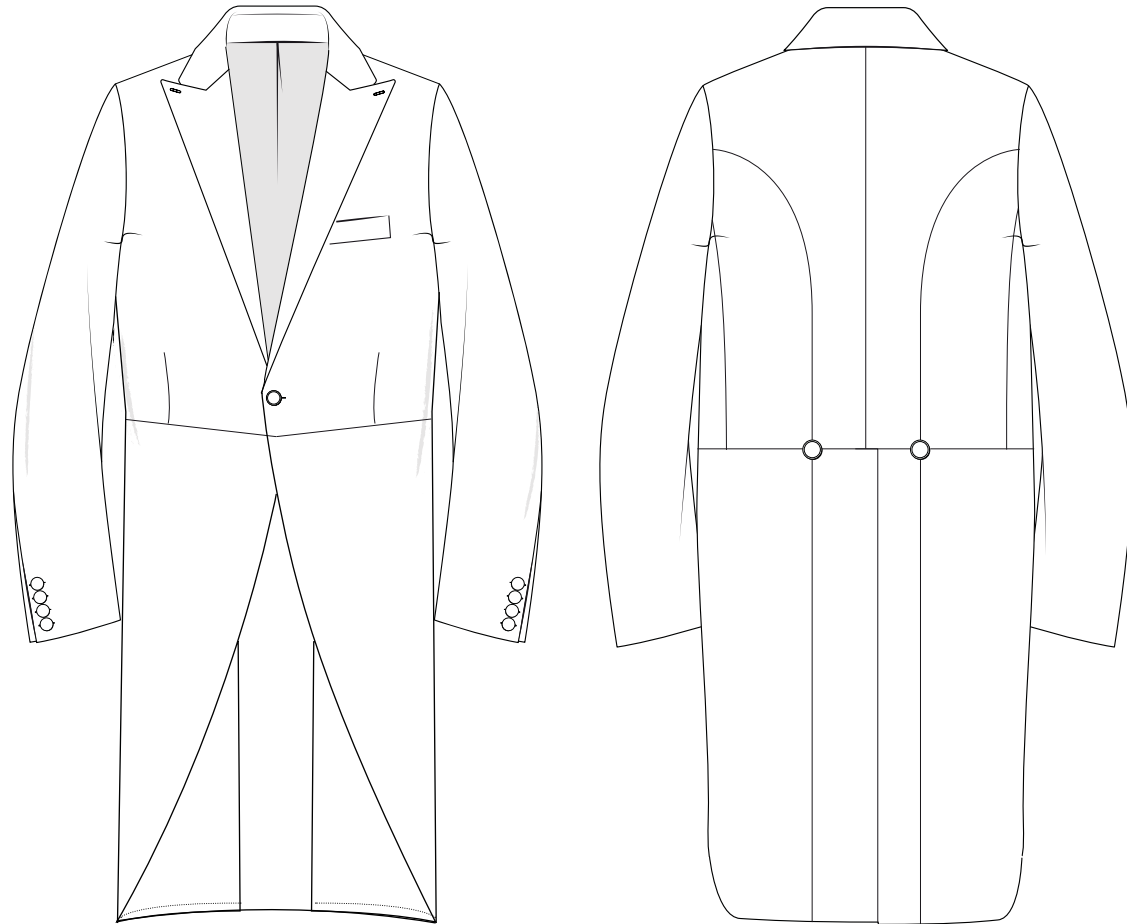
- |                             |                               |
|-----------------------------|-------------------------------|
| <u>Single Breasted</u>      | <u>Nehru Stand Collar</u>     |
| <u>Button 5 Jacket</u>      | <u>Out Breast Welt Pocket</u> |
| <u>Straight Facing Only</u> | <u>Centre Vent Only</u>       |
| <u>Square Fronts</u>        |                               |



NEHRU STAND COLLAR FROCK COAT  
STYLE 256

- |                             |   |
|-----------------------------|---|
| <u>Single Breasted</u>      | <u>Nehru Stand Collar</u>   |
| <u>Button 5 Frock Coat</u>  | <u>Out Breast Welt Pocket</u>   |
| <u>Straight Facing Only</u> | <u>Centre Vent Only</u>   |
| <u>Square Fronts</u>        | <u>Standard Pattern Length 38"</u><br><u>Recommended (+/-3") Only</u> |

SPECIAL OCCASION  
MORNING COAT

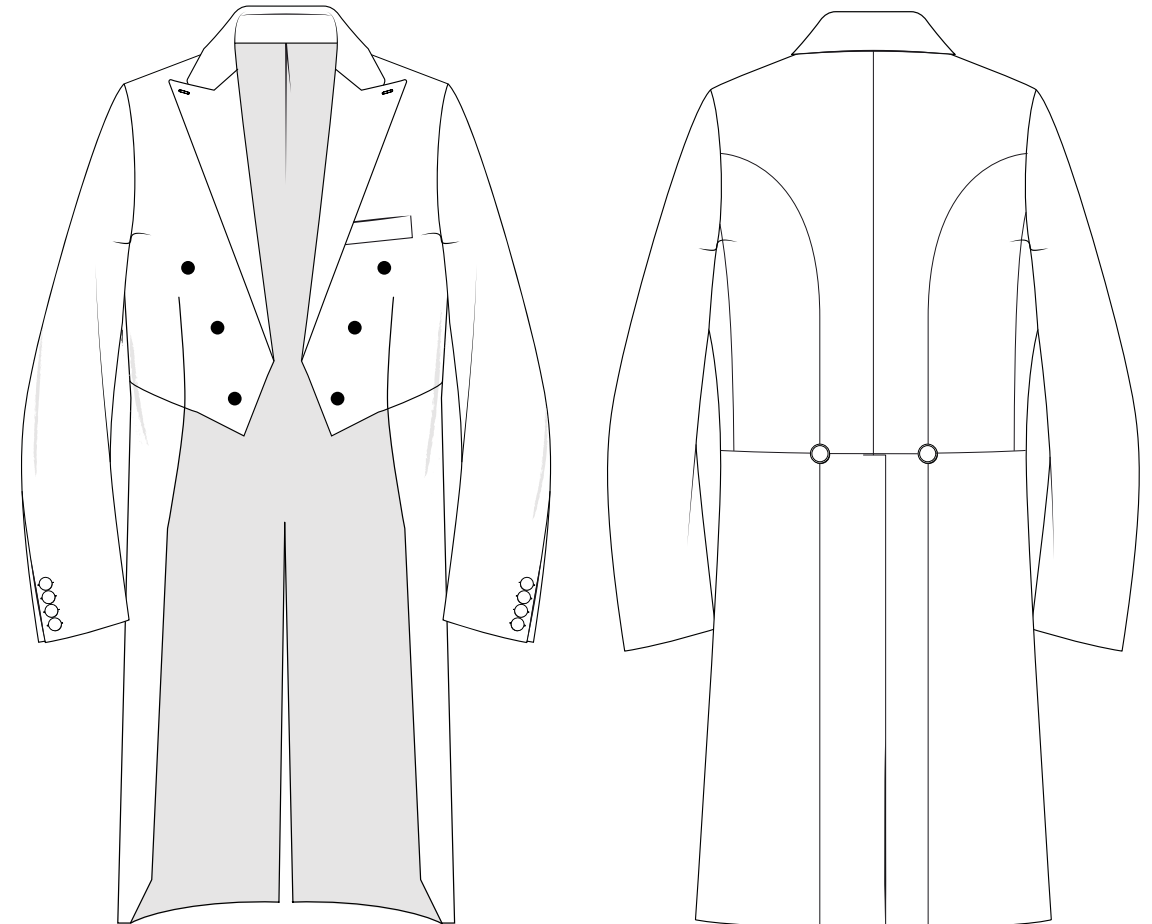


MORNING COAT  
Style 12  
*Link button option available*

4 Inch Peak Lapel  
Outbreast Welt  
One Button Fastening  
4 Button Sham Cuff ONLY

Waist Seam all around  
Hook Vent with 2 Buttons  
2 Lapel Holes - One Each Side

SPECIAL OCCASION  
EVENING TAIL COAT



EVENING DRESS COAT  
Style 15  
*With or without satin lapel*

4 Inch Peak Lapel  
Outbreast Welt  
3 Show 3 Buttons  
4 Button Sham Cuff ONLY

Waist Seam all around  
Hook Vent with 2 Buttons  
2 Lapel Holes - One Each Side