

## CHOOSE YOUR BLOCK

We offer 3 different fits to ensure the customer gets the very best out of his Made to Measure garment.

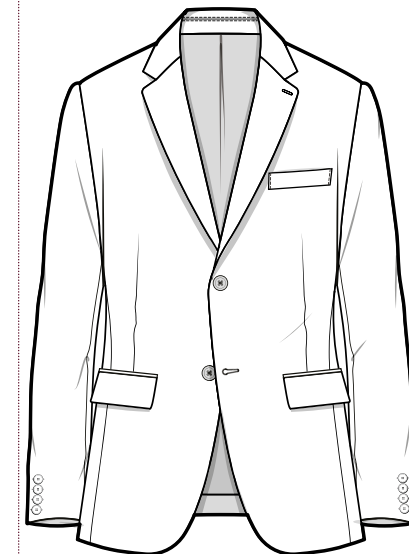
This is just the starting point, the measurements and figurations you provide, will determine the overall success of the finished garment. Take time to understand our blocks and their subtle differences, this will ensure you get the very best out of our service.



### Ritz Block Classic Fit

The Ritz offers straight forward elegance which shows off craftsmanship and tradition with real integrity. With an easy fit through the chest and bicep area it makes it the perfect choice for the city gent, in search of both comfort and distinguished styling.

*Half waist tolerance of 3 5/8"*



### Fulham Block Tailored Fit

The Fulham is designed as a slimmer alternative to the Ritz, offering a sleeker silhouette through the waist and sleeve giving a more masculine shape.

*Half waist tolerance is 2 7/8 "*

The Fulham's predecessor 'The Mayfair' is still available.



### Burlington Block Slim Fit

The Burlington is a clean, modern silhouette offering a distinctly stylish look with a fitted waist, higher armhole position and narrower bicep and cuffs, all helping to create an impeccable streamline profile.

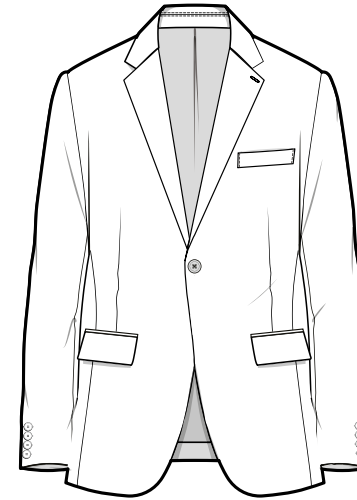
*Half waist tolerance is 2 1/2"*

*\* Half waist tolerance based on 6" drop*

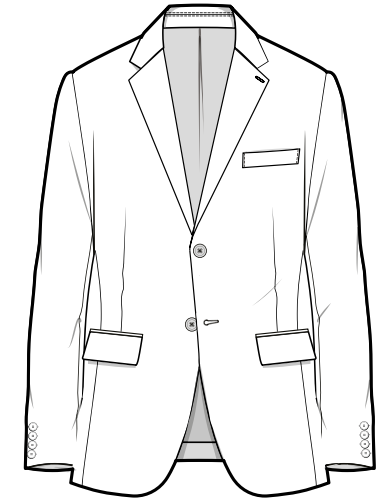
JACKET  
CHOOSE YOUR STYLE

Whether your style is fashion or more laid-back find the perfect match for you. Choose from a range of single breasted or double breasted jackets. Beautifully tailored to your measurements there are so many styles and feature options you can choose from.

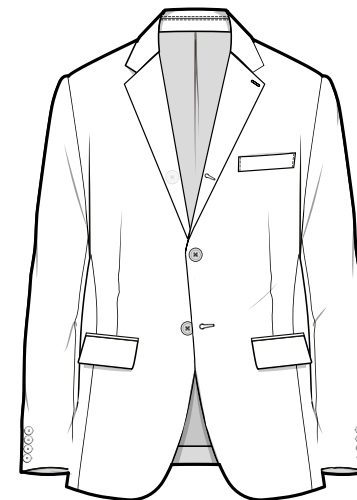
JACKET  
SINGLE BREASTED STYLES



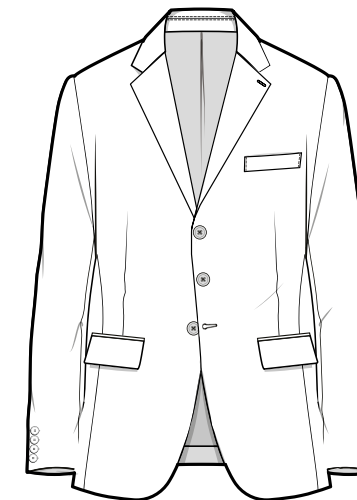
STYLE 6



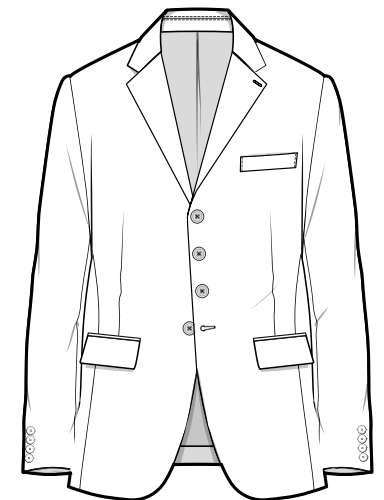
STYLE 2



STYLE 32



STYLE 7



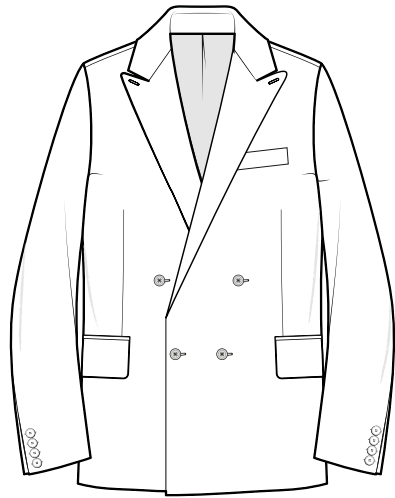
STYLE 4

*(Button 3 rolled as a button 2)*

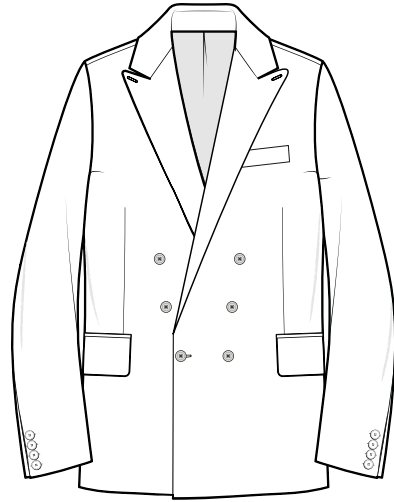
DINNER JACKETS

All styles are available as Dresswear  
Suffix the style number with the letters  
DW for dresswear i.e. Style 6DW

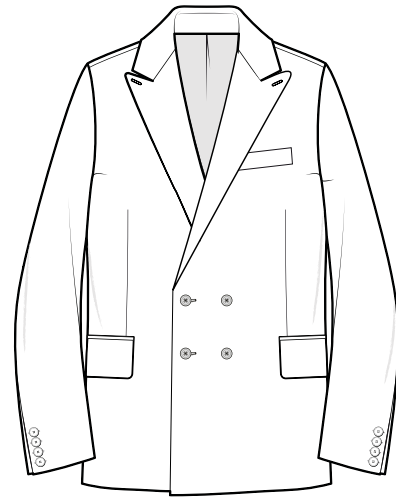
JACKET  
DOUBLE BREASTED STYLES



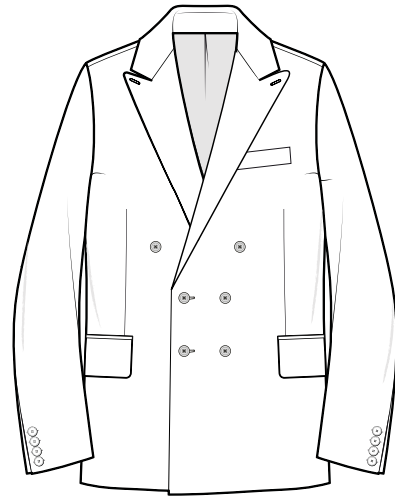
STYLE 21



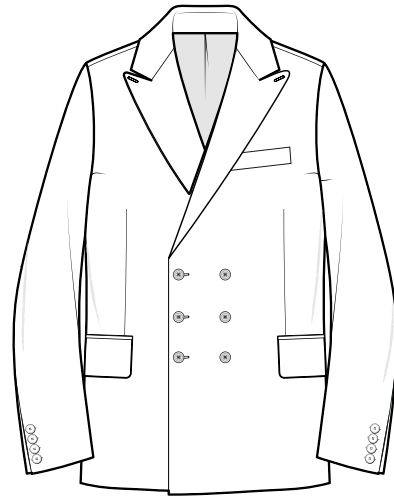
STYLE 22



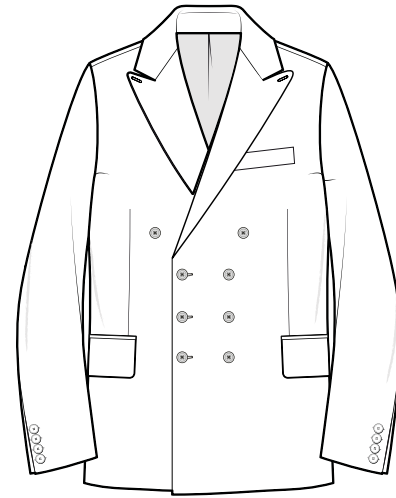
STYLE 23



STYLE 9



STYLE 36



STYLE 38

DINNER JACKETS

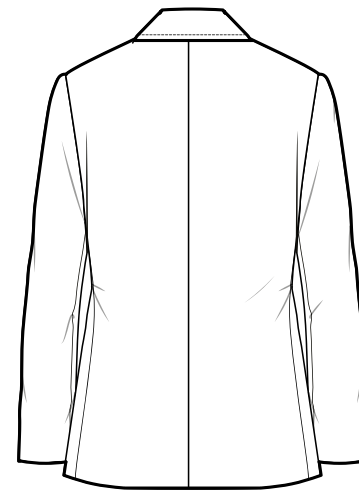
All styles are available as Dresswear  
Suffix the style number with the letters  
DW for dresswear i.e. Style 6DW



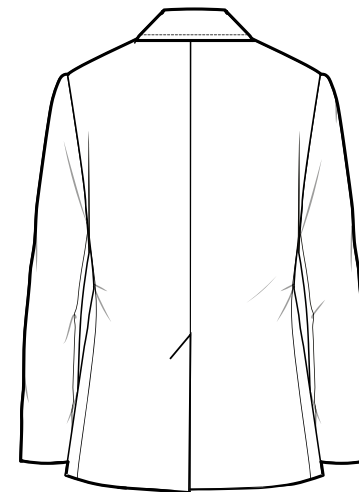
JACKET FEATURES

## CHOOSE YOUR VENT STYLE

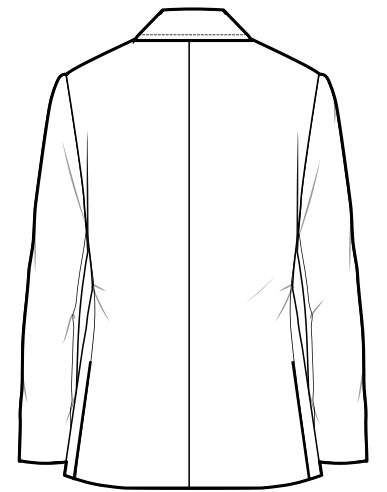
Some personal preference is involved in selecting the vent style for your jacket. Jacket vents commonly appear in two configurations: a single, centered vent or double-sided vents.



NO VENT



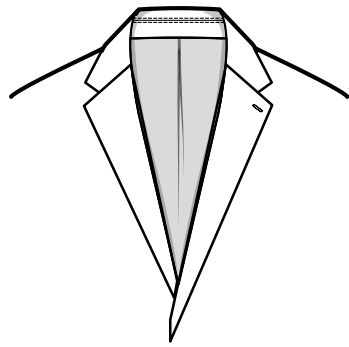
CENTRE VENT



SIDE VENT

JACKET

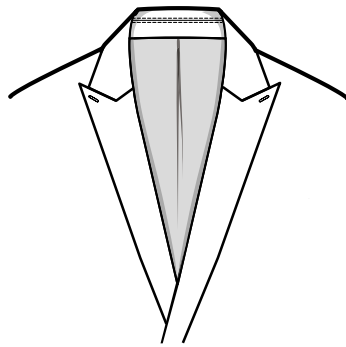
LAPEL SHAPES AND SIZES



NOTCH LAPEL

Available in widths  
2 1/2", 3" & 3 1/2"

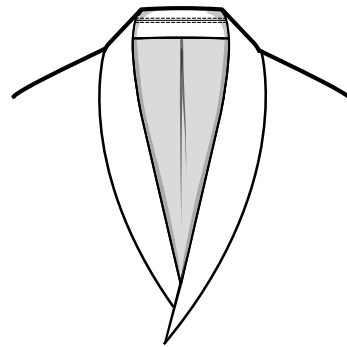
*Only available on SB Jackets*



PEAK LAPEL

Available in widths  
3", 3 1/2" & 4"

*Available on both SB & DB Jackets*



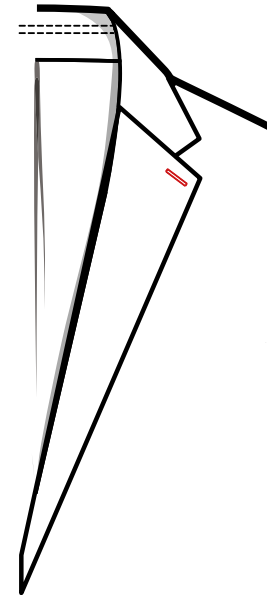
SHAWL COLLAR

Available in widths  
1 3/4" & 2 1/4"

*Only available on SB Jackets*

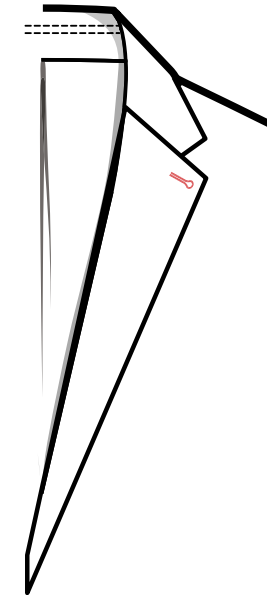
JACKET

LAPEL HOLES



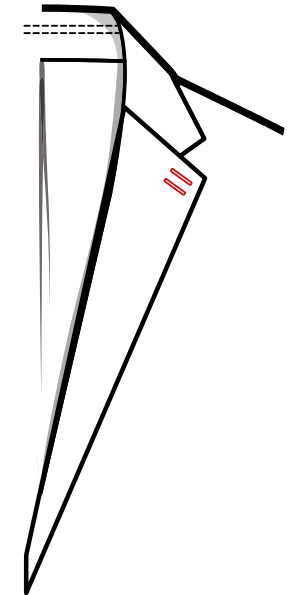
STANDARD LAPEL HOLE

Left Side  
*Option right side*



KEYHOLE LAPEL HOLE

Left Side  
*Option right side*

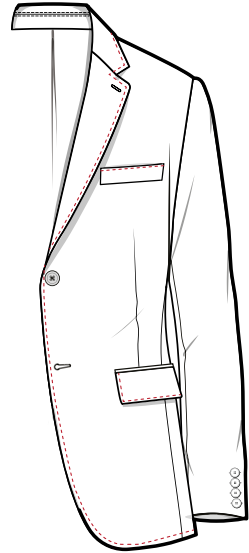


DOUBLE LAPEL HOLE

Left Side  
*Option right side*

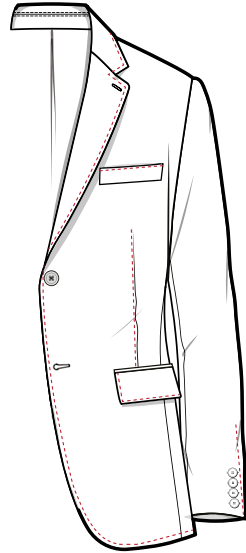
JACKET

# EDGE STITCHING POSITIONS



**ALL AMF**

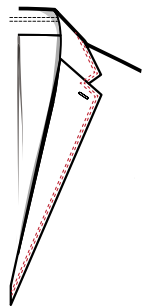
Available 1mm Stitch Lapel, Collar, Top of Out Breast, Skirt Flap Pocket, and Front Edge.



**EXTRA AMF**

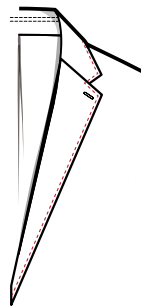
Available 1mm stitch. As shown above but with the additional below details.

- + Dartseam
- + Sleeve Vents
- + Vents



**TWIN STITCHED EDGES**

Twin Stitched Edges all for Lapels, Outer Pocket Flaps & Out Breast Pocket.



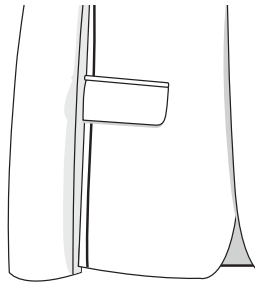
**1/4" SWELLED EDGES**

1/4" Swelled Edges all for Lapels Outer Pocket Flaps & Out Breast Pocket.

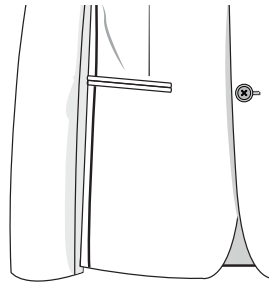


JACKET  
POCKET STYLES

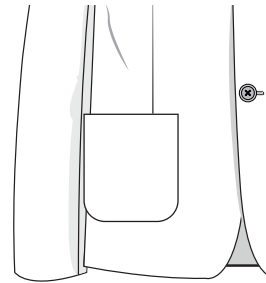
SKIRT POCKET OPTIONS



FLAP POCKET

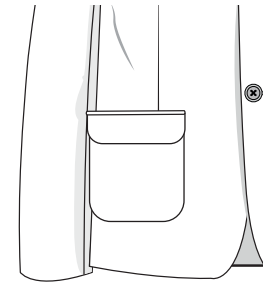


JETTED POCKET

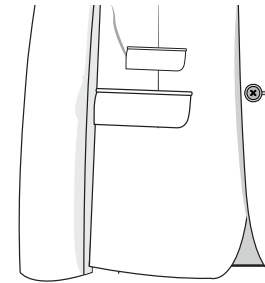


PATCH POCKET

POCKET STYLE OPTIONS

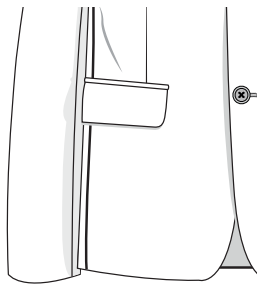


PATCH WITH FLAP  
*with or without button*

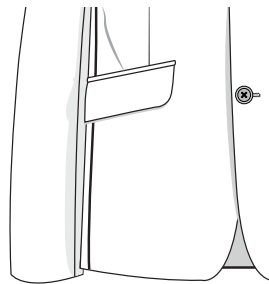


FLAP TICKET POCKET

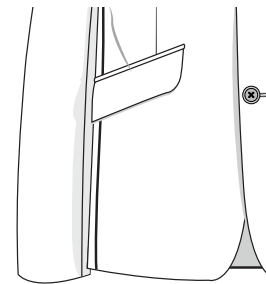
POCKET ANGLE OPTIONS



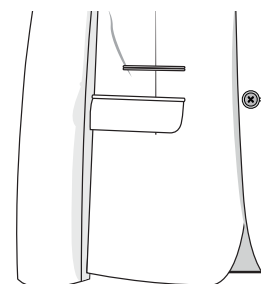
STRAIGHT  
POCKET ANGLE



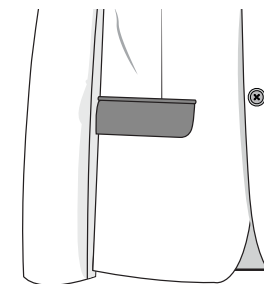
SLANT  
POCKET ANGLE



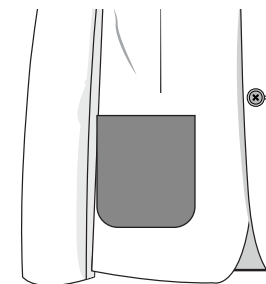
ACUTE SLANT  
POCKET ANGLE



JETTED TICKET POCKET

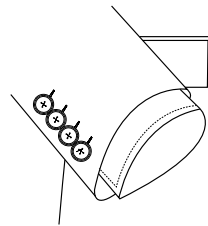


SATIN FLAP OR JETTS

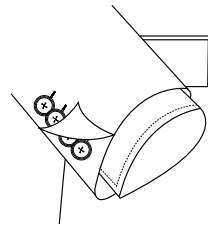


CONTRAST PATCH POCKETS

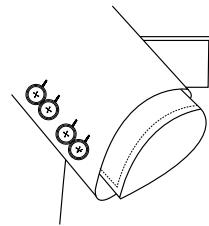
CUFF AND SLEEVE OPTIONS



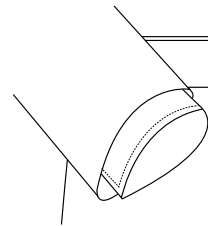
Button Sham Cuff  
1 to 6 buttons



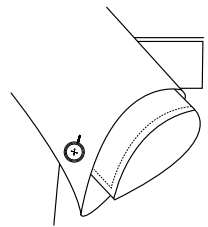
Real Hole Button Cuff  
1 to 6 buttons



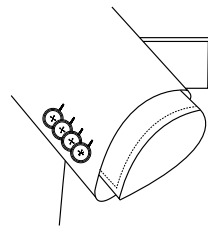
2 x 2 Grouping Cuff



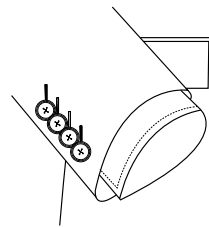
Plain Cuff No Vent  
With or without buttons



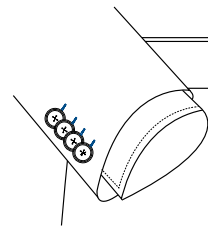
Fishtail Cuff



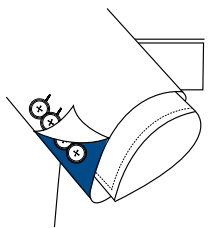
Kissing (waterfall)  
Button Cuff  
Available sham or real hole



Angled Cuff Button  
Hole Thread

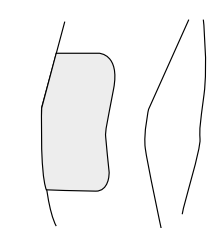


Coloured Button Holes  
Specify colour and position  
see below



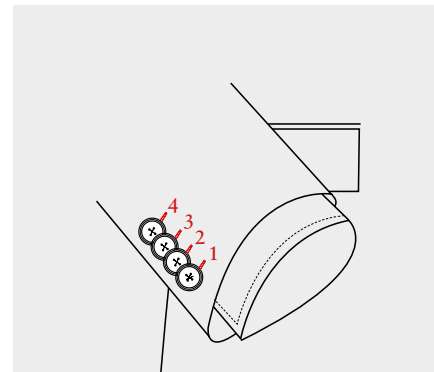
Flash Cuff

Select number from lining  
bunch or state to match lining



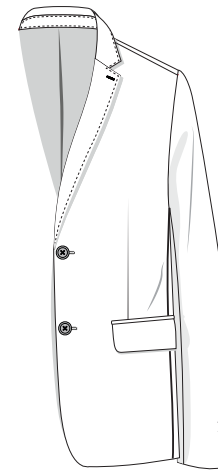
Elbow patches

Customer to supply or choose from  
selection in trim brochure

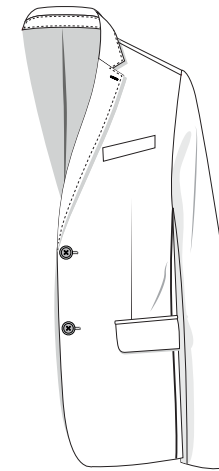


Coloured Button Holes  
The numbers against the button  
hole thread indicates the contrast  
thread position.

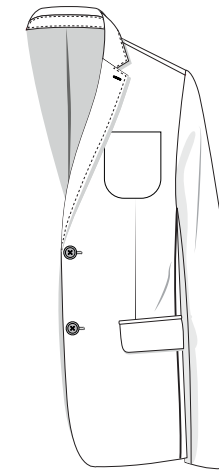
OUT BREAST POCKET STYLES



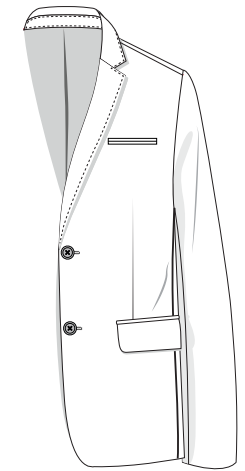
No Out Breast Pocket



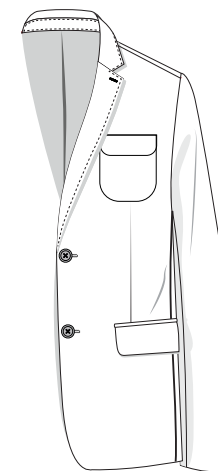
Out Breast Welt Pocket



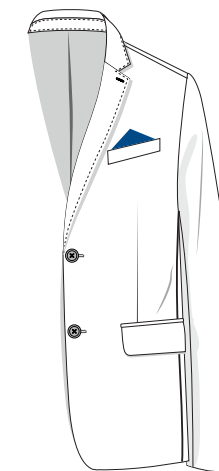
Out Breast Patch Pocket



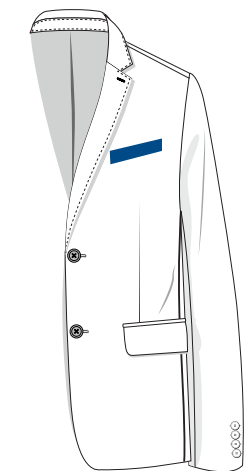
Out Breast Jetted Pocket



Out Breast Patch Pocket  
with Flap  
(with or without button)



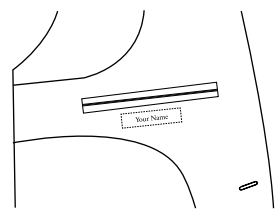
Pocket Bag to Match Lining



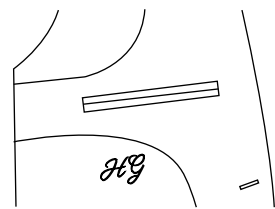
Satin Out Breast Welt Pocket



### INTERNAL EMBROIDERY



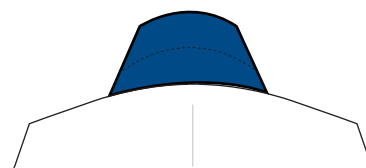
Inside Pocket Tape  
Max 24 Characters



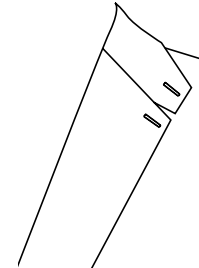
Initials into Lining  
Max 4 Characters  
*(State embroidery thread colour)*



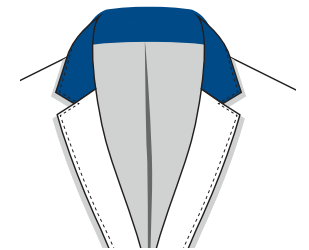
Name onto Collar Melton  
*(State embroidery thread colour)*



Contrast Under Collar Melton  
*Specify Melton code from trim pack*



Tab Collar  
Grown on Tab & Button  
*Only available on notch lapels*



Velvet Contrast Collar  
*Specify contrast velvet code either from the trim pack or supplier (Alcantara Collars available on request)*

### CONTRAST COLLAR OPTIONS



JACKET

INTERIOR POCKETS



- a Pen Pocket

---

- b In Breast Pocket

---

- c Mobile Phone Pocket

---

- d Ticket Pocket

---

- e In Breast Pocket with Triangle Tab and Button

INTERIOR FEATURES



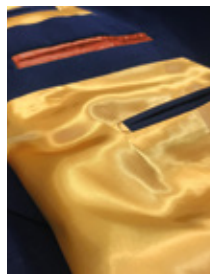
Lining in-breast Pocket  
*Option: Set into Facing, Straight Facing Only*



Triangle Flap Tab & Button Security Pocket



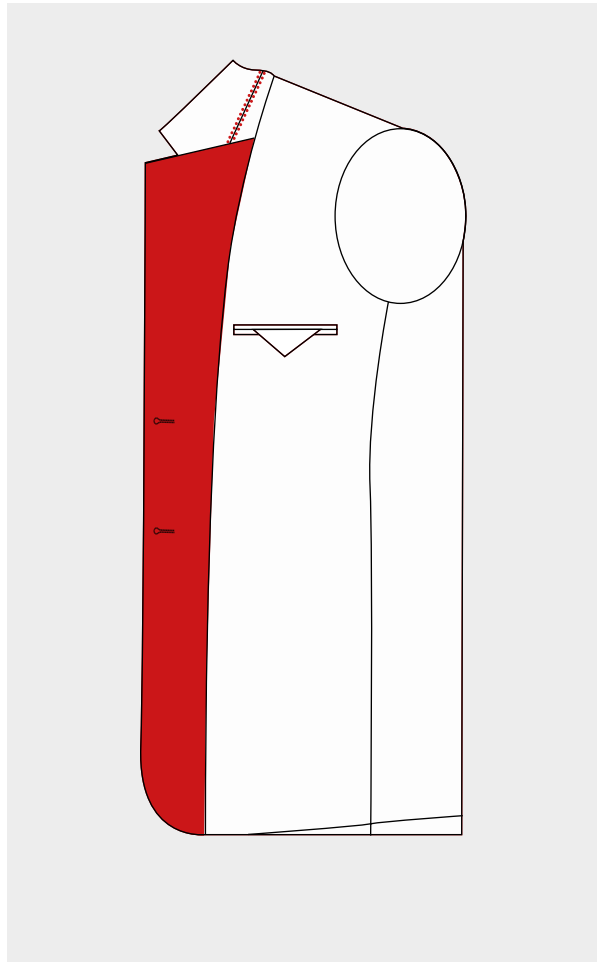
Zip Pocket  
*Available on request*



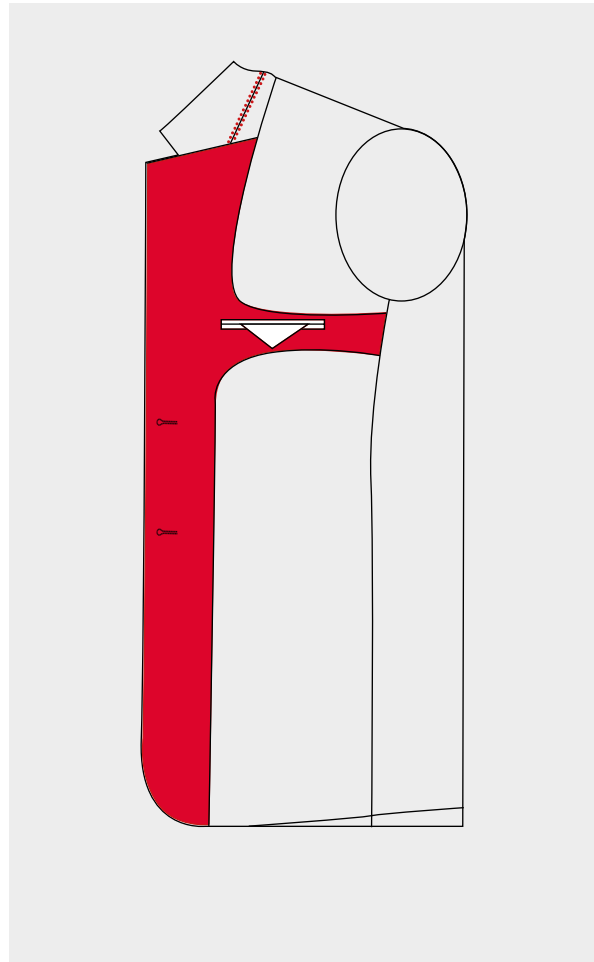
Contrast Lining Jett  
*Specify lining code*



### FACING OPTIONS

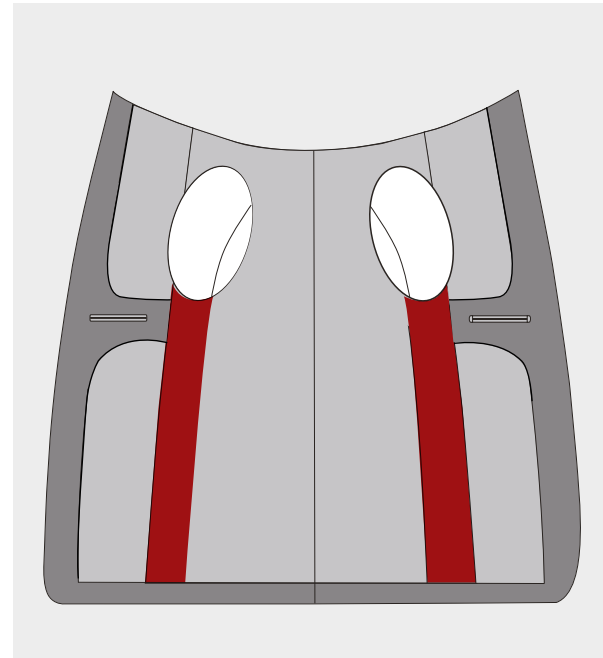


**STRAIGHT FACING**  
*(Cloth Jetted Inbreast Pockets)*

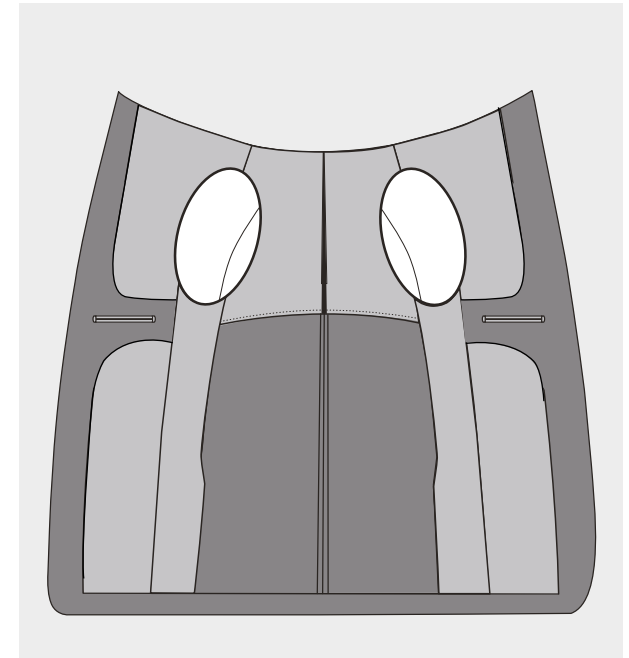


**PIANO**  
*(Curved Facing - Lining Jetted Inbreast Pockets)*

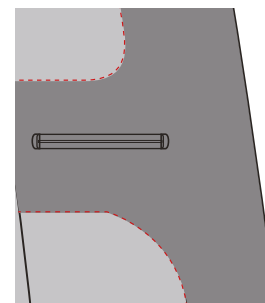
### LINING DETAILS



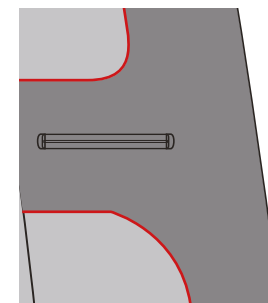
Lining in 2 or more colours



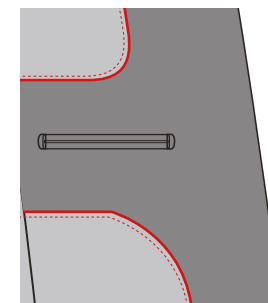
Buggy Lining



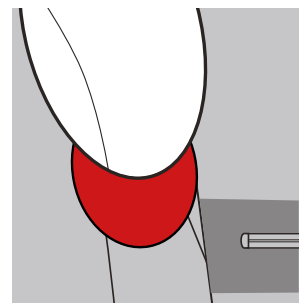
Columbia Stitching  
*(Not available on satin linings)*



Piping to Facing



Columbia Stitching  
 & Piping to Facing



Perspiration Pads