

Made To Measure

# TAILORING





## JACKET

Garment Standard Specifications	Page 5
The Construction	Page 8
Jacket Blocks	Page 10
Jacket Styles	Page 12
Jacket Features	Page 16 — 31

## TROUSERS

Trouser Cut, Shape & Hem	Page 32
Waistband Style	Page 34
Trouser Features	Page 36 — 39

## WAISTCOATS

Waistcoat Styles	Page 40
Lapel Styles	Page 44
Pockets & Features	Page 45

## OVERCOATS

Overcoat Styles	Page 48
Special Occasion Frock Coat Styles	Page 50
Special Occasion Nehru Stand Collar Styles	Page 52
Special Occasion Morning Coats	Page 54
Special Occasion Evening Dress Coats	Page 55

## COUNTRY, HIGHLAND & HUNT TAILORING

Country Jacket	Page 57
Plus Twos & Fours	Page 60
Country Gilet	Page 64
Kilt Jacket & Waistcoat	Page 66
Hunt Jacket	Page 68
Hunt Waistcoat	Page 72





# THE JACKET

The below is the standard jacket specification and is the starting point for your garment.



## EXTERIOR

- Out Breast Pocket
- Straight Flap Skirt Pocket
- Four Button Sham Cuff
- Natural Corozo Buttons
- Side Vents
- Bluff (Plain) Edges

## INTERIOR

- Cloth Jetted Pen Pocket
- Lining Jetted In-Breast Pockets
- Lining Jetted Ticket Pocket
- Curved (Piano) Facing

## LAPEL STYLE

The standard lapel size & shape is 3 1/2" notch lapel on all single breasted styles, except SB4 which comes with a 3" notch. 4" peak lapel on all double breasted styles.

*See lapel shape, size and options section*

## INTERIOR STYLE

Lining jetted in-breast pocket set into curved cloth frame, right side triangle flap, tab & button, D tack stitching on pocket mouth.

# WAISTCOATS

The below is the standard waistcoat specification and is the starting point for your garment.



## WAISTCOAT EXTERIOR

- Cloth Front
- Lower Welted Pockets
- Lining Back
- Sliding Strap & Buckle
- Natural Corozo Buttons
- Bluff (Plain) Edges

## WAISTCOAT INTERIOR

- Cloth Facing
- Lining Back & Forepart

# TROUSERS

The below is the standard trousers specification and is the starting point for your garment.



## TROUSER EXTERIOR

- Belt Loops
- Slant Pockets
- Zip Fly
- Half Lined to the Front
- 1 Hip Pocket
- (Right with Hole & Button with D Tack Stitching)*

## TROUSER INTERIOR

- Black Herringbone Waistband Lining with Rubberised Shirt Grip, Bagged Out Pockets, French Bearer & Crutch Piece.
- (Cream Herringbone with Shirt Grip available on request)*





A — Half Canvas  
B — Padded lapel

## The Floating Chest Piece —

The most commonly used internal quality in our garments is the floating chest piece, with bridal tape and fused fronts.

This may be hard to visualise but it means the chest canvas inside the suit is not attached to the forepart. An interfacing is fused over sections of the front and chest where padding is required most, then a separate canvas piece is stitched in and around the armhole and down the bridal tape, but left unstitched in certain strategic areas. This enables the jacket to move with you, aiding comfort and retaining shape.



## Half canvas with a padded lapel —

With modern day innovation becoming more and more popular, the quality of a product becomes key.

The luxury half canvas construction incorporates traditional techniques, with modern day methods, to enhance appearance and give maximum comfort and durability.

*Picture above (A)* - A canvas extends from the lapel across the chest into the armhole, helping to maintain shape retention of the outer fabric. Over time, this gradually moulds and retains the form of the wearer, giving the garment an enhanced level of comfort.

The manufacturing of the upper arm of a man's jacket is a significant factor in the quality, and the look, of the finished garment.

The shoulder pad accentuates the masculine silhouette, whilst the shoulder head roll, invisible to the wearer, is an important element to the drape of the sleeve.

*Picture above (B)* - Padded lapel. The canvas, which runs through the lapel, is lashed with thread attaching it to the outer fabric. This forms the internal structure of the lapel and produces shape, creating a beautiful fall and curl, starting from the fold of the collar down to the first button.

## CHOOSE YOUR BLOCK

We offer 3 different fits to ensure the customer gets the very best out of his Made to Measure garment.

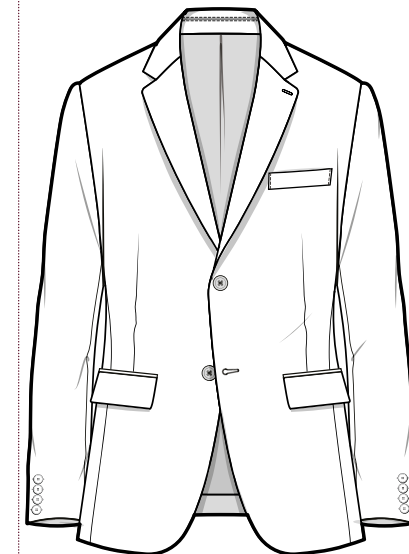
This is just the starting point, the measurements and figurations you provide, will determine the overall success of the finished garment. Take time to understand our blocks and their subtle differences, this will ensure you get the very best out of our service.



### Ritz Block Classic Fit

The Ritz offers straight forward elegance which shows off craftsmanship and tradition with real integrity. With an easy fit through the chest and bicep area it makes it the perfect choice for the city gent, in search of both comfort and distinguished styling.

*Half waist tolerance of 3 5/8"*



### Fulham Block Tailored Fit

The Fulham is designed as a slimmer alternative to the Ritz, offering a sleeker silhouette through the waist and sleeve giving a more masculine shape.

*Half waist tolerance is 2 7/8 "*

The Fulham's predecessor 'The Mayfair' is still available.



### Burlington Block Slim Fit

The Burlington is a clean, modern silhouette offering a distinctly stylish look with a fitted waist, higher armhole position and narrower bicep and cuffs, all helping to create an impeccable streamline profile.

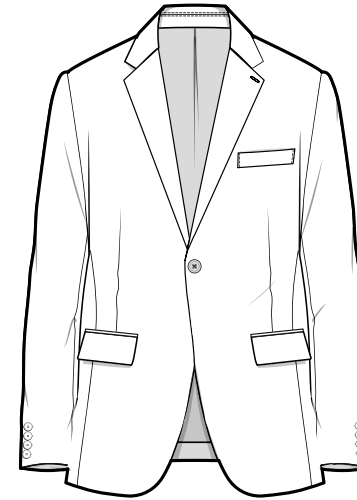
*Half waist tolerance is 2 1/2"*

*\* Half waist tolerance based on 6" drop*

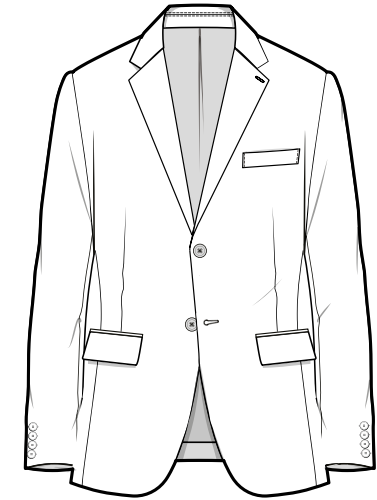
JACKET  
CHOOSE YOUR STYLE

Whether your style is fashion or more laid-back find the perfect match for you. Choose from a range of single breasted or double breasted jackets. Beautifully tailored to your measurements there are so many styles and feature options you can choose from.

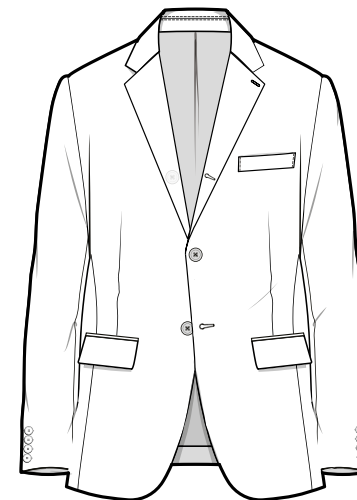
JACKET  
SINGLE BREASTED STYLES



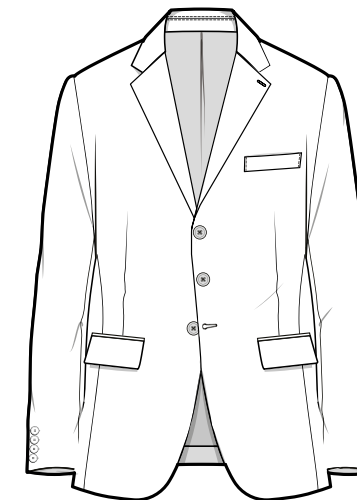
STYLE 6



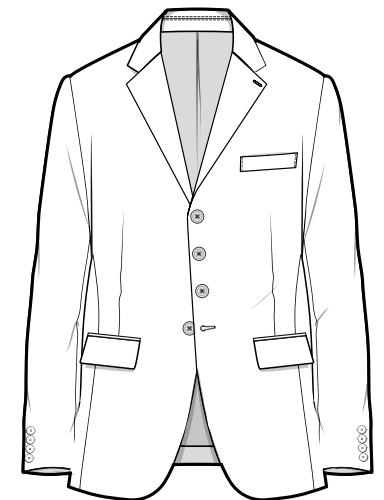
STYLE 2



STYLE 32



STYLE 7



STYLE 4

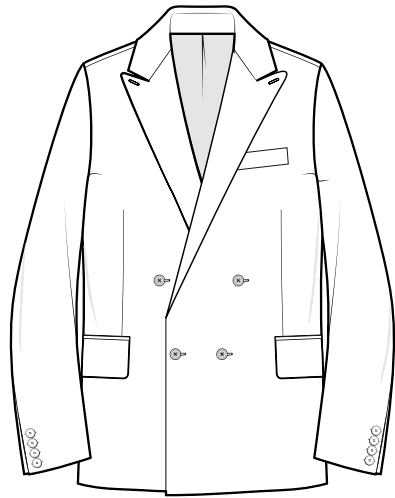
*(Button 3 rolled as a button 2)*

DINNER JACKETS

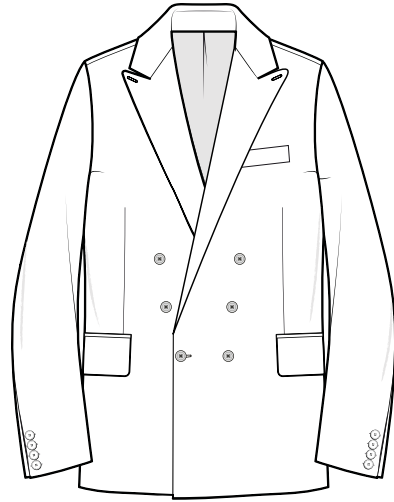
All styles are available as Dresswear  
Suffix the style number with the letters  
DW for dresswear i.e. Style 6DW



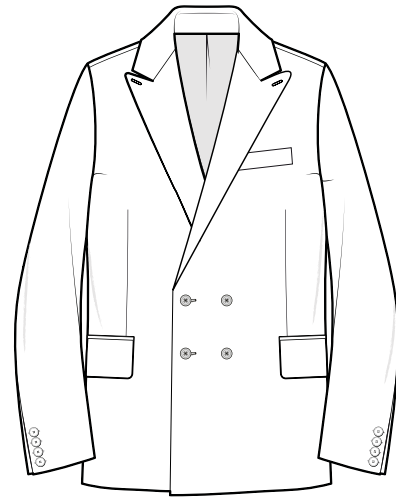
JACKET  
DOUBLE BREASTED STYLES



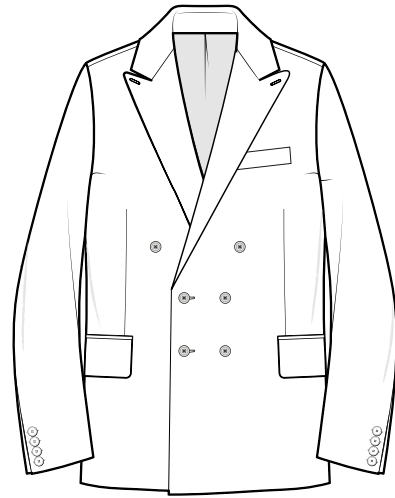
STYLE 21



STYLE 22



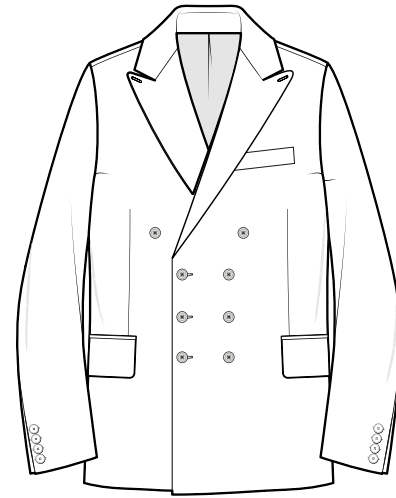
STYLE 23



STYLE 9



STYLE 36



STYLE 38

DINNER JACKETS

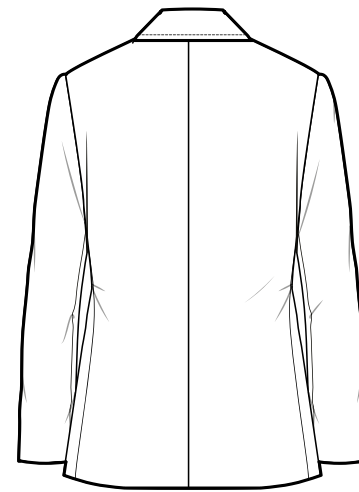
All styles are available as Dresswear  
Suffix the style number with the letters  
DW for dresswear i.e. Style 6DW



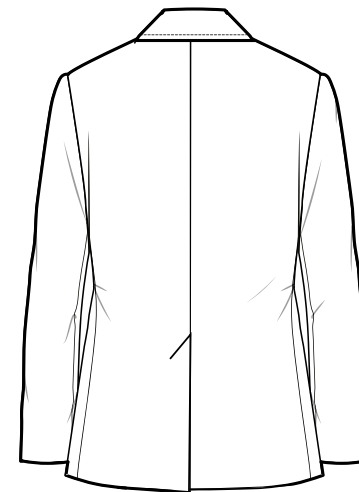
JACKET FEATURES

## CHOOSE YOUR VENT STYLE

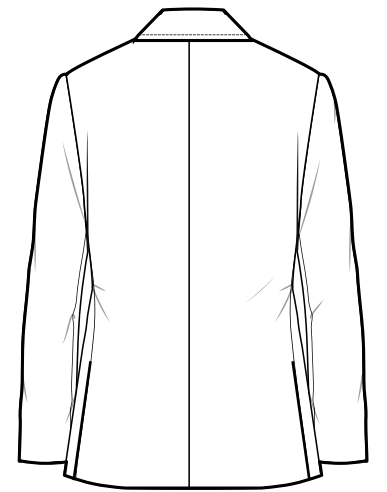
Some personal preference is involved in selecting the vent style for your jacket. Jacket vents commonly appear in two configurations: a single, centered vent or double-sided vents.



NO VENT



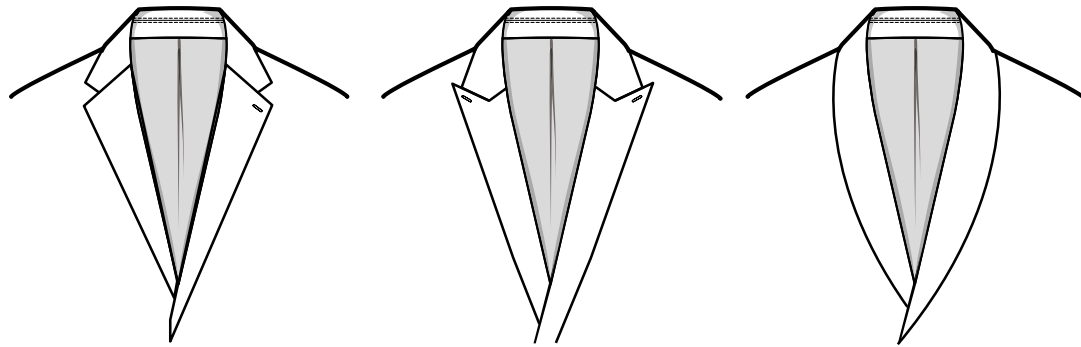
CENTRE VENT



SIDE VENT

JACKET

LAPEL SHAPES AND SIZES



NOTCH LAPEL

Available in widths  
2 1/2", 3" & 3 1/2"

*Only available on SB Jackets*

PEAK LAPEL

Available in widths  
3", 3 1/2" & 4"

*Available on both SB & DB Jackets*

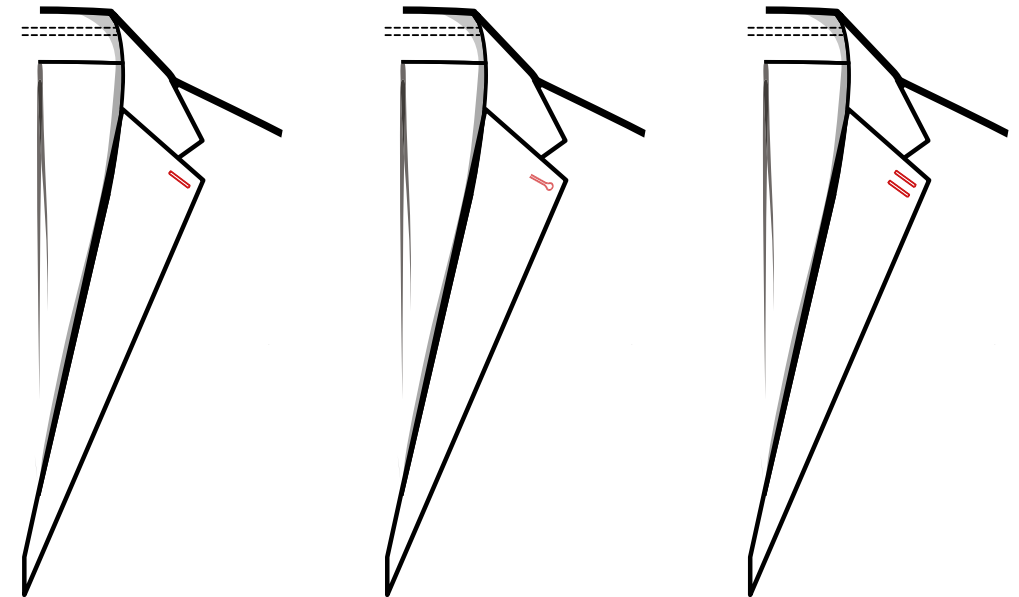
SHAWL COLLAR

Available in widths  
1 3/4" & 2 1/4"

*Only available on SB Jackets*

JACKET

LAPEL HOLES



STANDARD LAPEL HOLE

Left Side  
*Option right side*

KEYHOLE LAPEL HOLE

Left Side  
*Option right side*

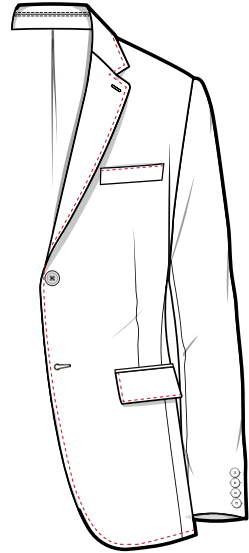
DOUBLE LAPEL HOLE

Left Side  
*Option right side*



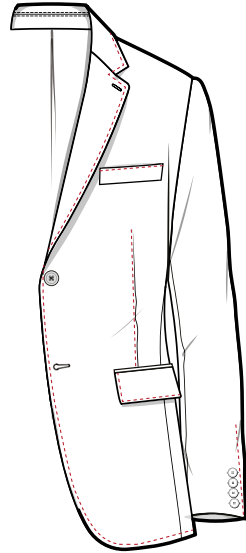
JACKET

# EDGE STITCHING POSITIONS



**ALL AMF**

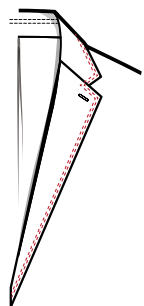
Available 1mm Stitch Lapel, Collar, Top of Out Breast, Skirt Flap Pocket, and Front Edge.



**EXTRA AMF**

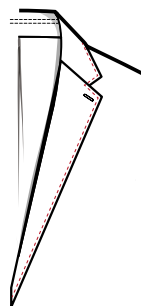
Available 1mm stitch. As shown above but with the additional below details.

- + Dartseam
- + Sleeve Vents
- + Vents



**TWIN STITCHED EDGES**

Twin Stitched Edges all for Lapels, Outer Pocket Flaps & Out Breast Pocket.



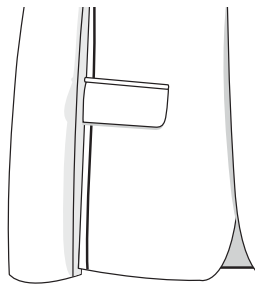
**1/4" SWELLED EDGES**

1/4" Swelled Edges all for Lapels Outer Pocket Flaps & Out Breast Pocket.

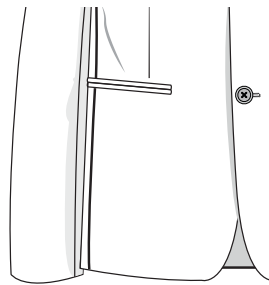


JACKET  
POCKET STYLES

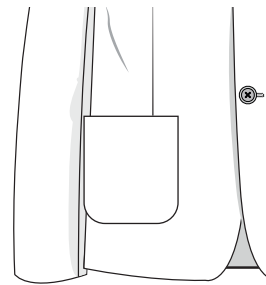
SKIRT POCKET OPTIONS



FLAP POCKET

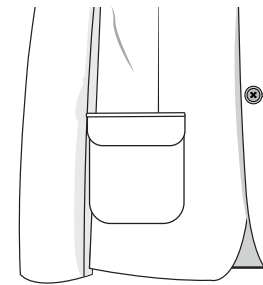


JETTED POCKET

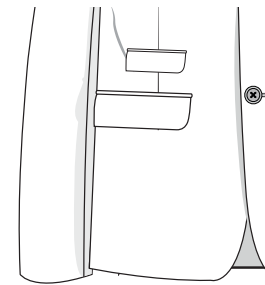


PATCH POCKET

POCKET STYLE OPTIONS

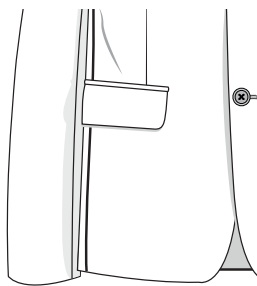


PATCH WITH FLAP  
*with or without button*

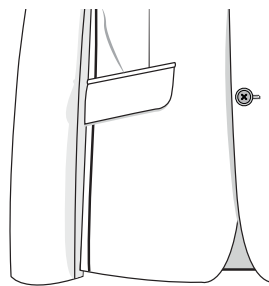


FLAP TICKET POCKET

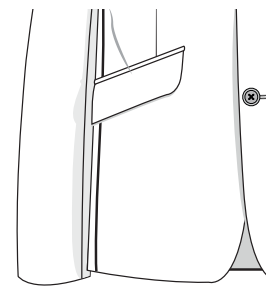
POCKET ANGLE OPTIONS



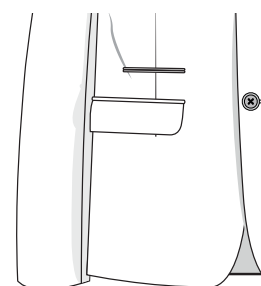
STRAIGHT  
POCKET ANGLE



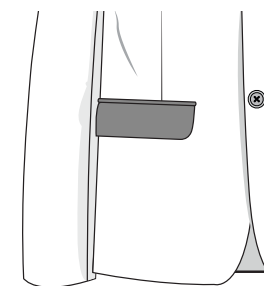
SLANT  
POCKET ANGLE



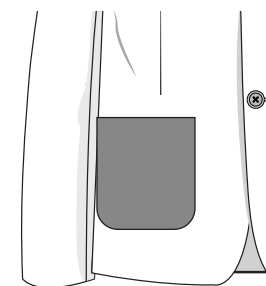
ACUTE SLANT  
POCKET ANGLE



JETTED TICKET POCKET

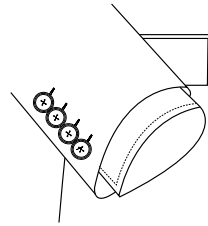


SATIN FLAP OR JETTS

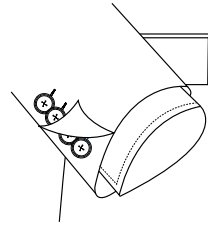


CONTRAST PATCH POCKETS

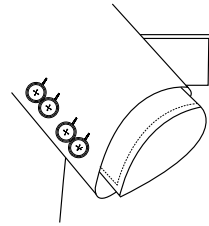
CUFF AND SLEEVE OPTIONS



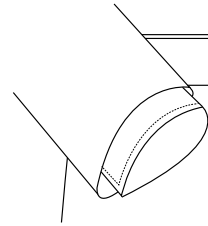
Button Sham Cuff  
1 to 6 buttons



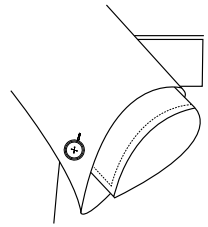
Real Hole Button Cuff  
1 to 6 buttons



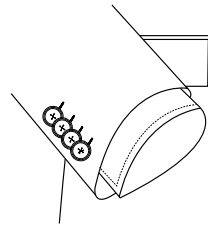
2 x 2 Grouping Cuff



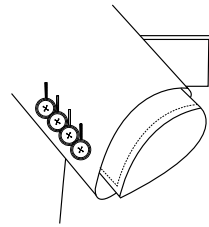
Plain Cuff No Vent  
With or without buttons



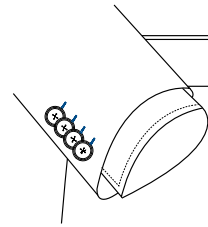
Fishtail Cuff



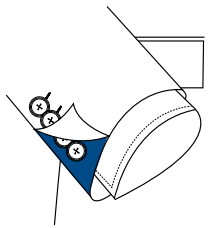
Kissing (waterfall)  
Button Cuff  
Available sham or real hole



Angled Cuff Button  
Hole Thread

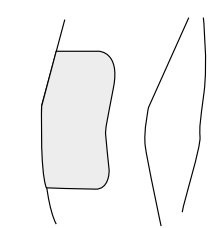


Coloured Button Holes  
Specify colour and position  
see below



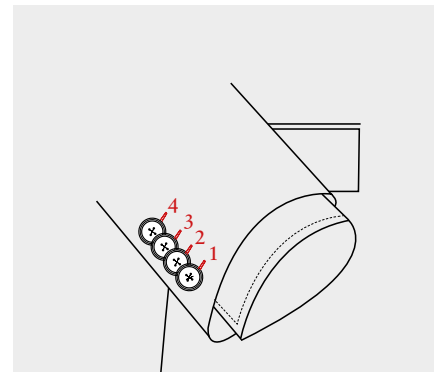
Flash Cuff

Select number from lining  
bunch or state to match lining



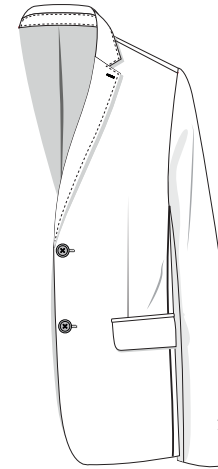
Elbow patches

Customer to supply or choose from  
selection in trim brochure

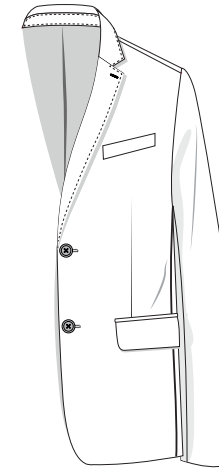


Coloured Button Holes  
The numbers against the button  
hole thread indicates the contrast  
thread position.

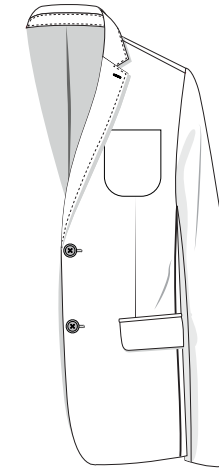
OUT BREAST POCKET STYLES



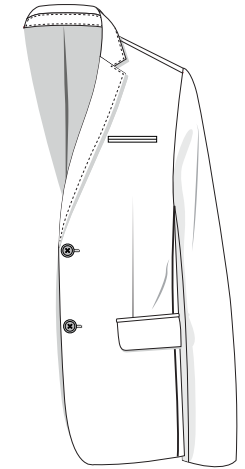
No Out Breast Pocket



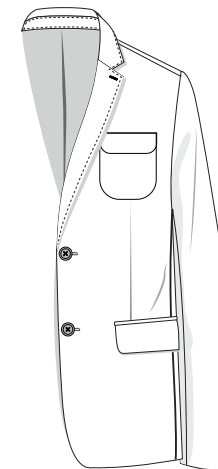
Out Breast Welt Pocket



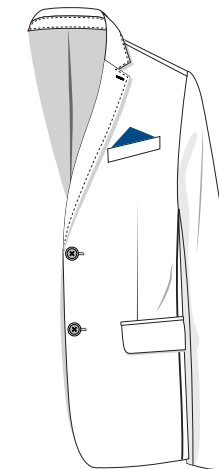
Out Breast Patch Pocket



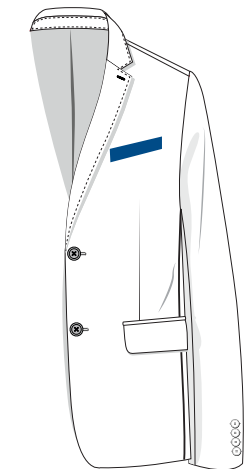
Out Breast Jetted Pocket



Out Breast Patch Pocket  
with Flap  
(with or without button)



Pocket Bag to Match Lining

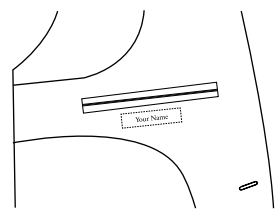


Satin Out Breast Welt Pocket

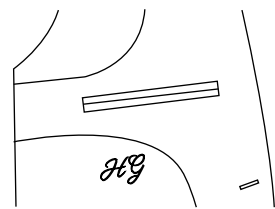


JACKET

INTERNAL EMBROIDERY



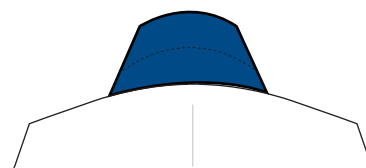
Inside Pocket Tape  
Max 24 Characters



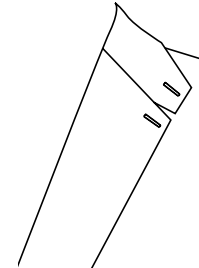
Initials into Lining  
Max 4 Characters  
*(State embroidery thread colour)*



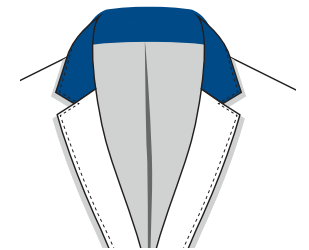
Name onto Collar Melton  
*(State embroidery thread colour)*



Contrast Under Collar Melton  
*Specify Melton code from trim pack*



Tab Collar  
Grown on Tab & Button  
*Only available on notch lapels*



Velvet Contrast Collar  
*Specify contrast velvet code either from the trim pack or supplier (Alcantara Collars available on request)*

JACKET

CONTRAST COLLAR OPTIONS





JACKET

INTERIOR POCKETS



- a Pen Pocket

---

- b In Breast Pocket

---

- c Mobile Phone Pocket

---

- d Ticket Pocket

---

- e In Breast Pocket with Triangle Tab and Button

INTERIOR FEATURES



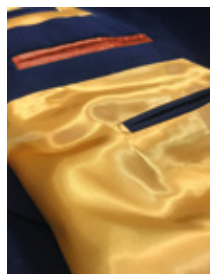
Lining in-breast Pocket  
*Option: Set into Facing, Straight Facing Only*



Triangle Flap Tab & Button Security Pocket



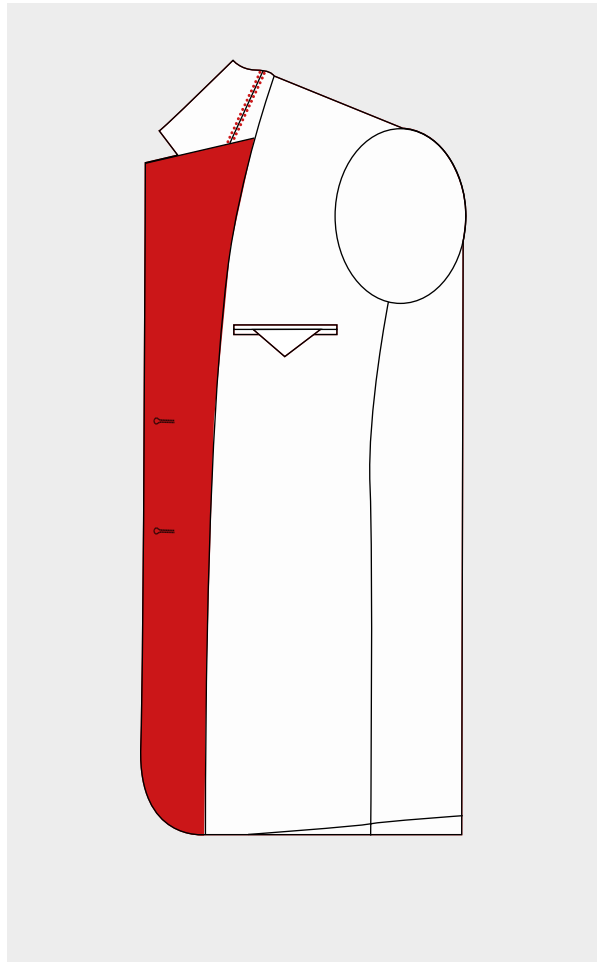
Zip Pocket  
*Available on request*



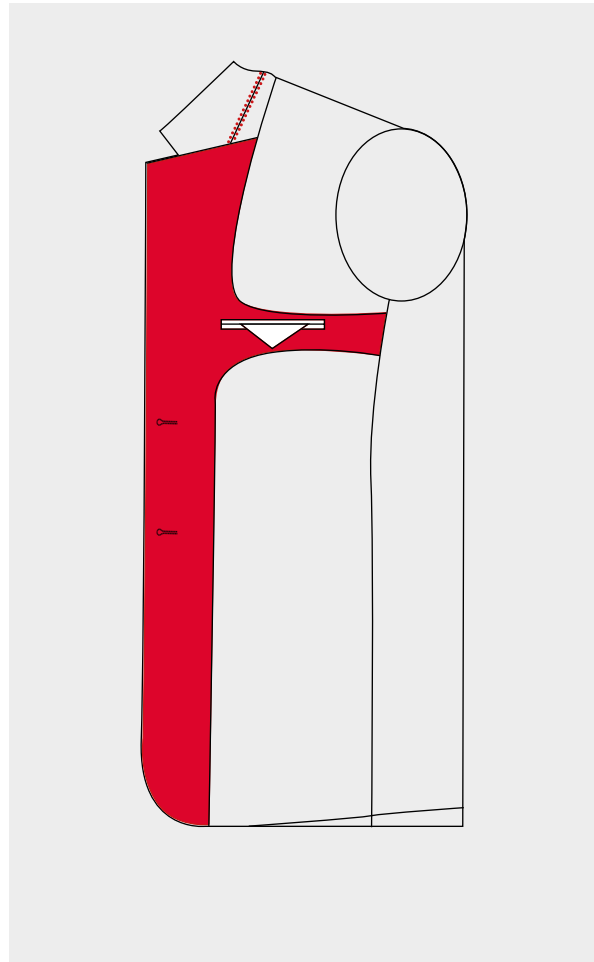
Contrast Lining Jet  
*Specify lining code*



FACING OPTIONS

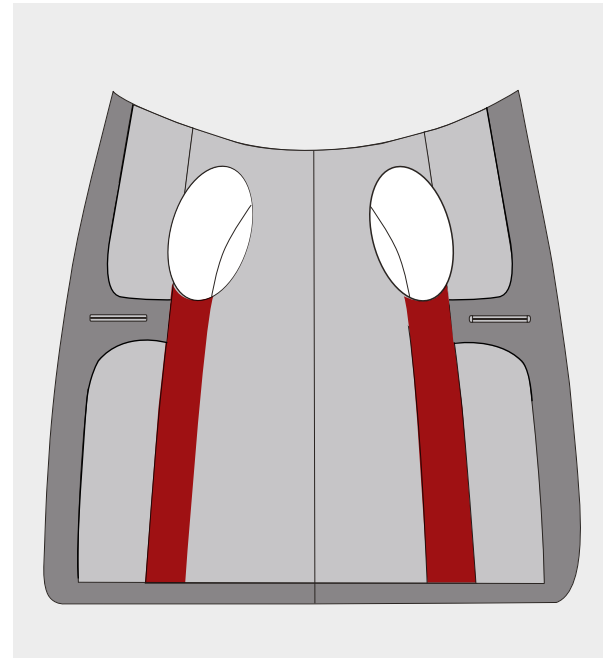


**STRAIGHT FACING**  
*(Cloth Jetted Inbreast Pockets)*

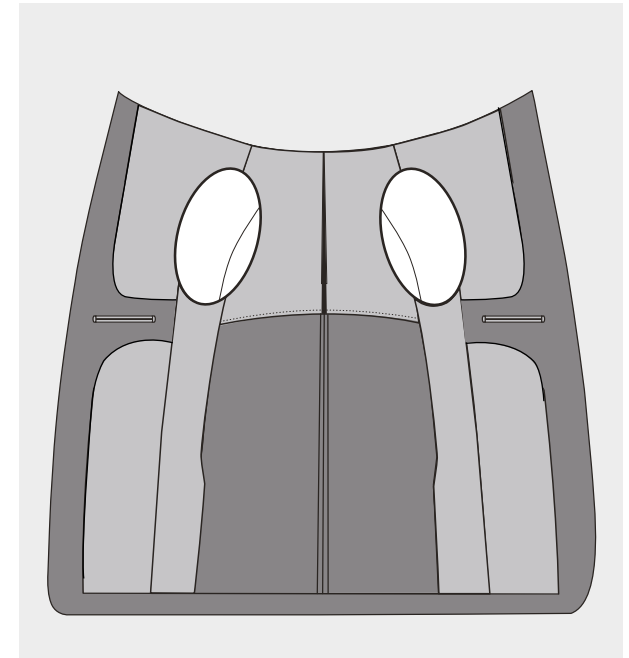


**PIANO**  
*(Curved Facing - Lining Jetted Inbreast Pockets)*

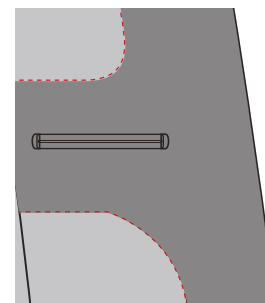
LINING DETAILS



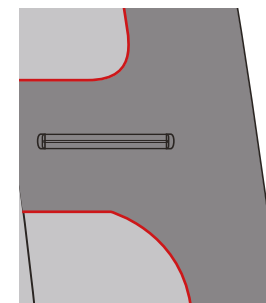
Lining in 2 or more colours



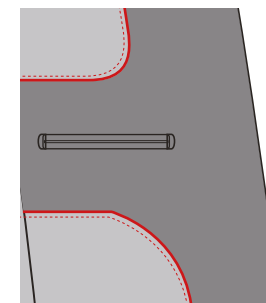
Buggy Lining



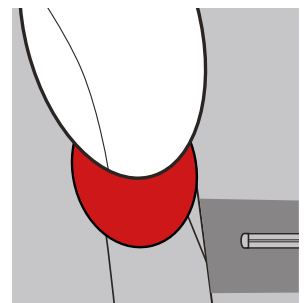
Columbia Stitching  
*(Not available on satin linings)*



Piping to Facing



Columbia Stitching  
& Piping to Facing



Perspiration Pads





# TROUSERS

## TROUSER CUT

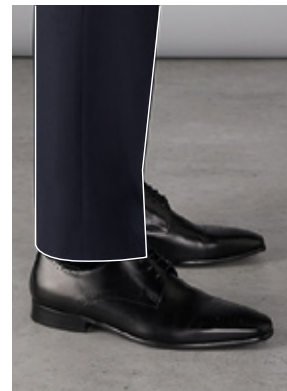


**TAILORED**  
Classic Cut



**SLIM CUT**  
Slimmer in the Thigh. Best used in conjunction with a narrow Bottom width i.e. 15", 16" & 17" Bottoms

## SHAPE AND HEM



**PLAIN BOTTOMS**  
*with Kick Tape*



**TURN UPS**  
Standard is 1 1/2" Depth  
1" to 3" in 1/2" Variable  
Options with Kick Tape



**WEST POINT  
ANGLED HEM**  
*with Kick Tape on front only*

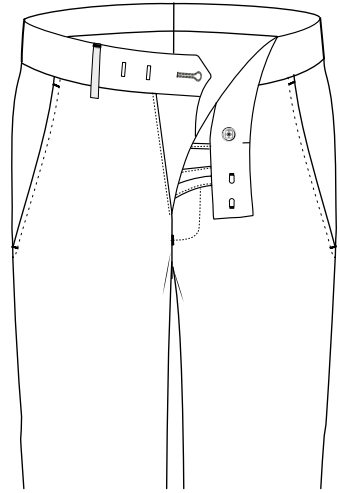


**V CUT OR SLIT CUT HEM**

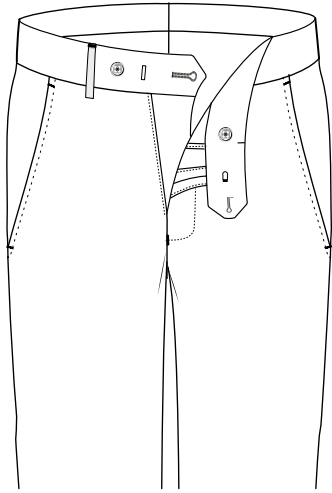
**UNFINISHED BOTTOMS**

If requested, this will be 4" longer than the outside leg stated.

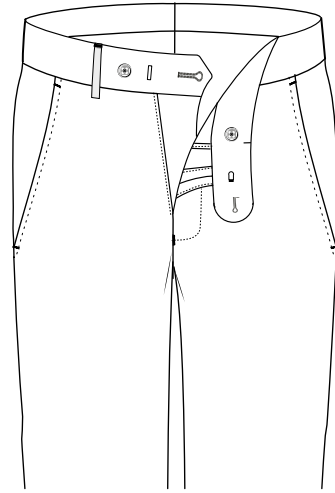
## WAISTBAND STYLES



Square Extension  
Hook & Bar

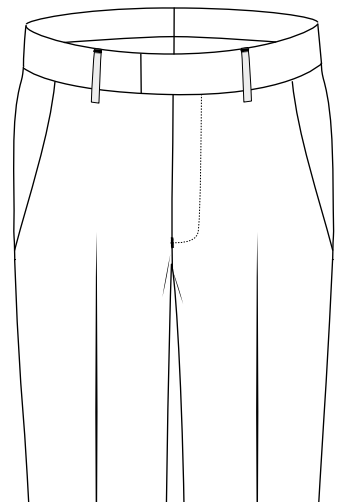


Pointed Extension  
Hole & Button



Rounded Extension  
Hole & Button

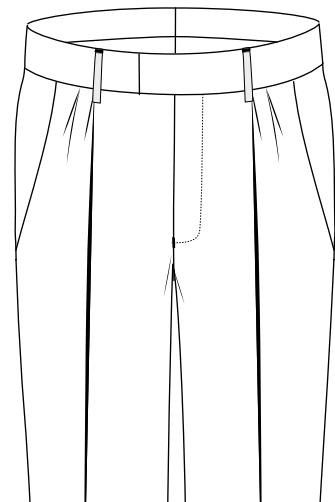
## TROUSER FRONTS



Plain Fronts



Single Reverse Pleat  
(Option Forward Pleat)



Double Reverse Pleats  
(Option Forward Pleats)

## WAISTBAND FEATURES



Plain Waistband  
(No Loops)



Belt Loops



Tunnel Loops



Twin Loops



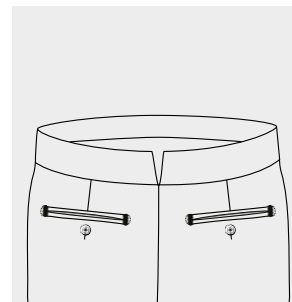
Pointed Strap & Buckle  
with overlapping adjuster



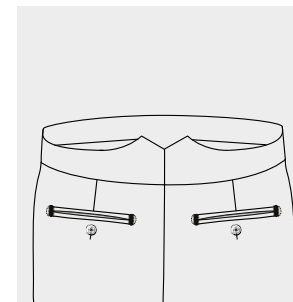
Tab & Button Elastic  
Side Adjusters



Strap & Buckle  
Adjusters into waistband



V Cut Back



Peak Back Waistband



Internal Brace Buttons  
(Option External Brace Buttons)



Belt Prong



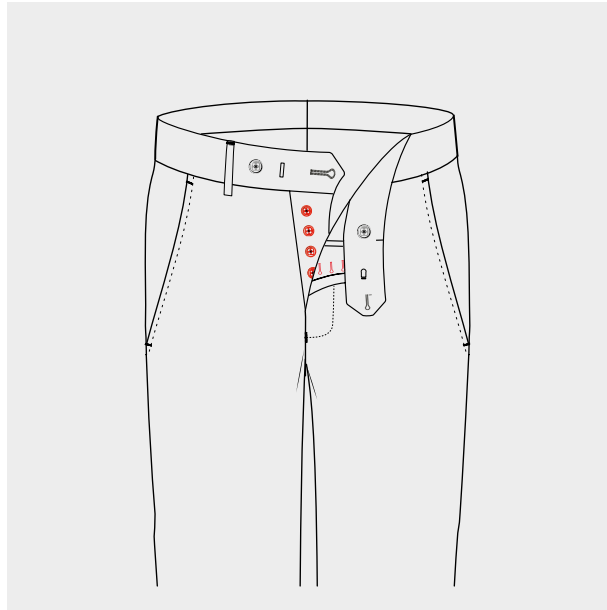
### WAISTBAND TRIM

Picture shows Cream Curtain Waistband with Shirt Grip. Black curtain waistband with shirt grip and black herringbone trim is standard.

## FLY OPTIONS

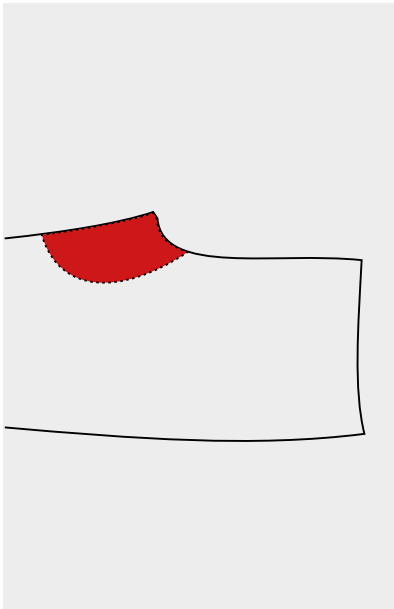


Zip Fly  
Option Metal Zip Fly

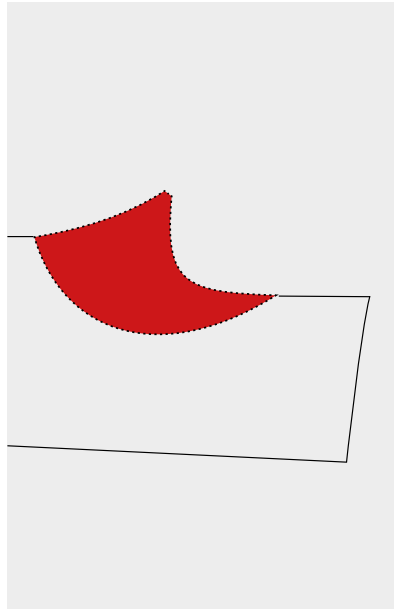


Button Fly

## INTERNAL

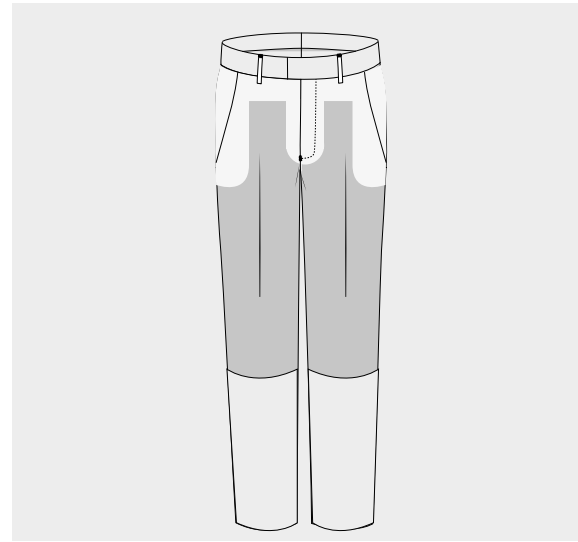


Double Crotch  
Additional fabric positioned as above

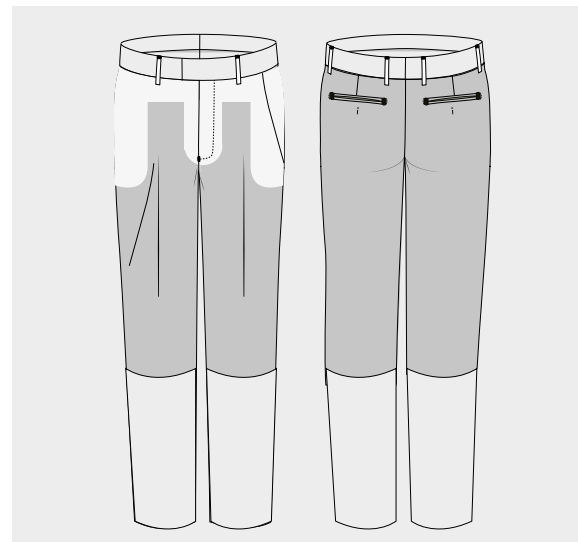


Double Seat  
Additional fabric positioned as above

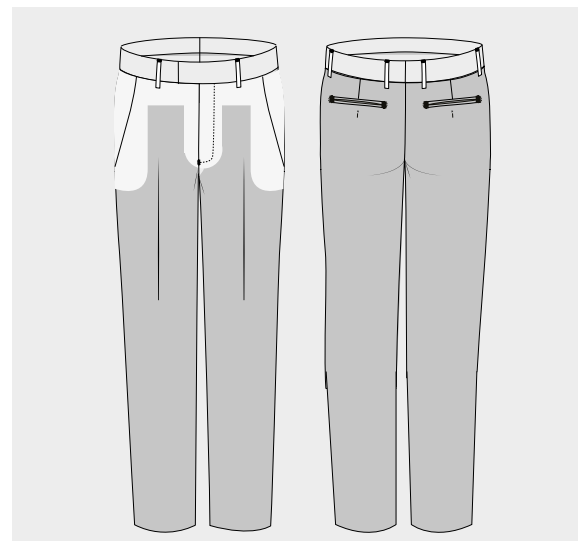
## LEG LININGS



Half Lined Front Only  
(Standard Option)



Half Lined Front & Back



Fully Lined Front & Back



## SIDE POCKETS



Slant Side Pocket



Straight Side Pocket



Vertical Jettted Side Pocket



Right Side Internal Coin Pocket



Dropped Welted  
Cross Pocket  
Plain Front Only



Full Cross  
Side Pocket  
Plain Fronts Only

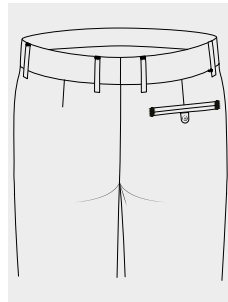


Frog Mouth  
Side Pocket  
Plain Fronts Only

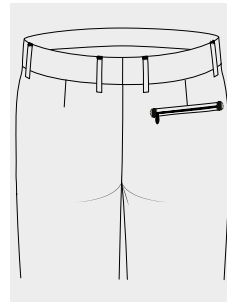
## BACK POCKETS



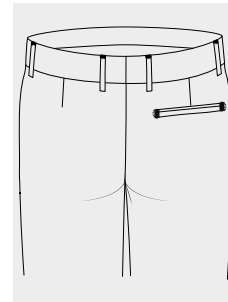
1 Right Hip Pocket  
Hole & Button



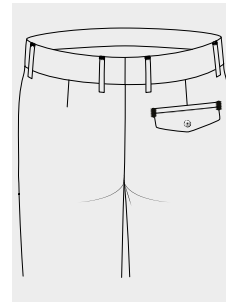
1 Right Hip Pocket  
Tab & Button



1 Right Hip Jettted  
Pocket with a zip



1 Right Hip Pocket  
Welted



1 Right Hip Pocket Flap  
with or without Button

All the above back pockets can be switched to the left hand side or pockets can be placed on both sides

## CASH POCKETS



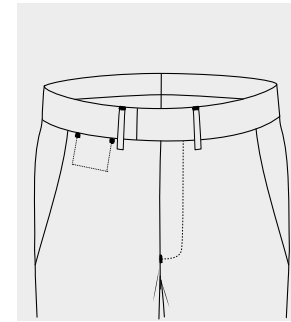
Right side pocket with  
flap plus button



Right side pocket jettted

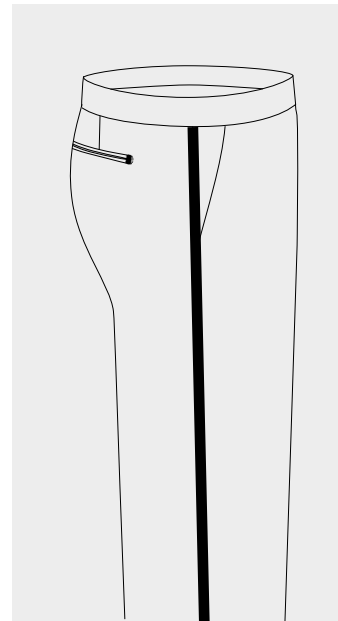


Right side pocket with  
Flap & Button

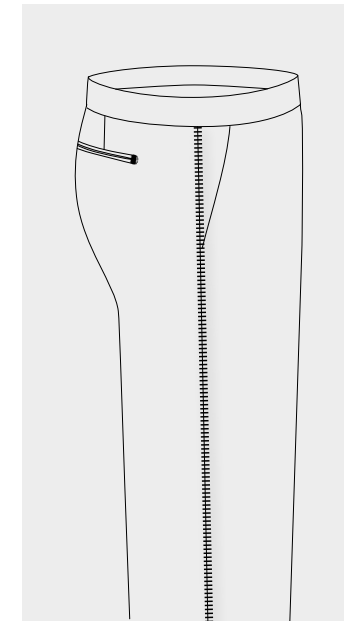


Right side internal pocket also  
available with a zip option

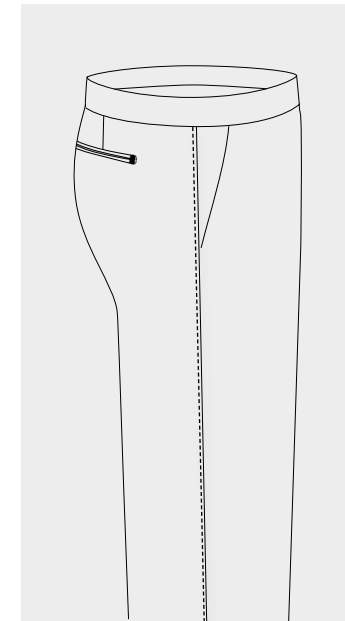
## SIDE SEAMS



Satin Stripe



Satin Braid

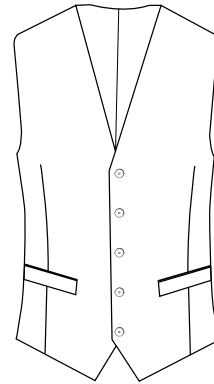


Raised Side Seam

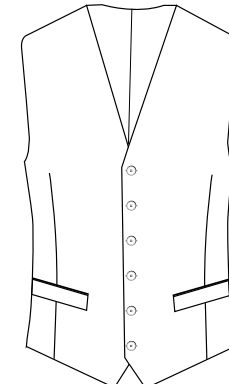


# WAISTCOATS

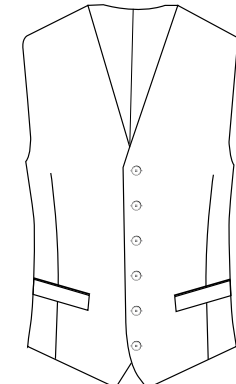
## STRAIGHT V OPTIONS



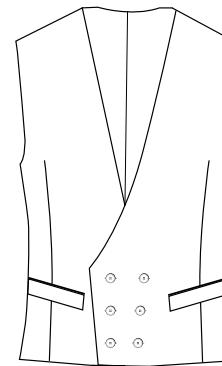
V223  
*Long Point*



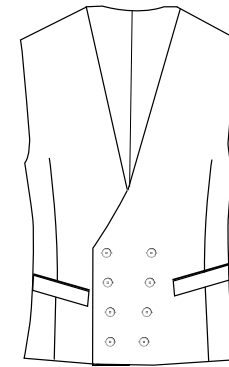
V4  
*Short Points*



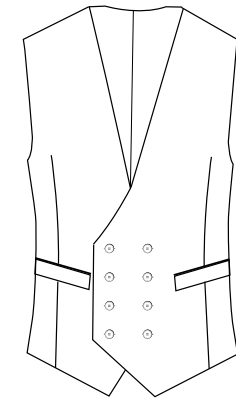
V50  
*Curved to Point*



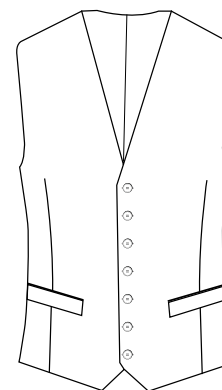
V6  
*No opening required*



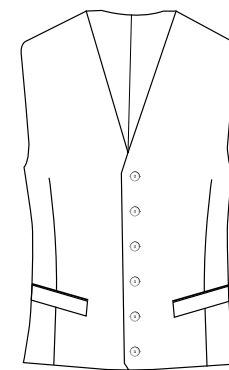
V46



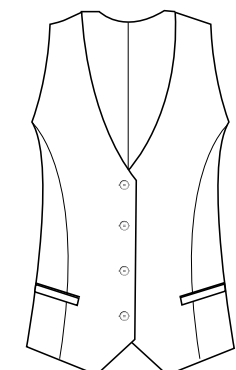
V48



V19



V30



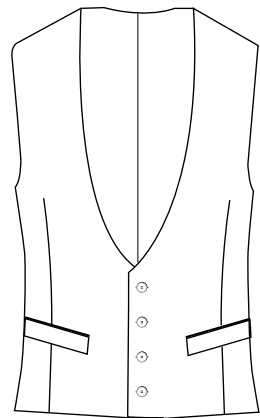
LV4  
*Ladies Waistcoat*



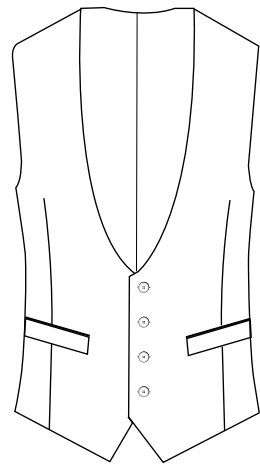
### ADD A LAPEL

You can now add lapels to your waistcoat.  
Choose from a notch, peak or shawl lapel.

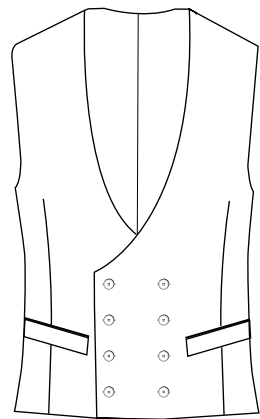
## CURVED V OPTIONS



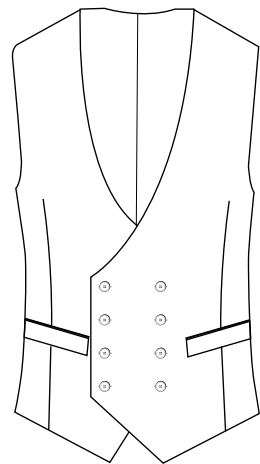
V40



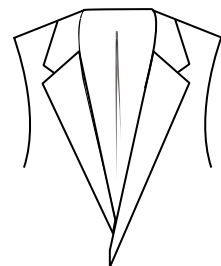
V41



V44



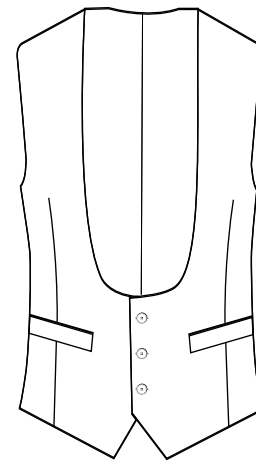
V45



### ADD A LAPEL

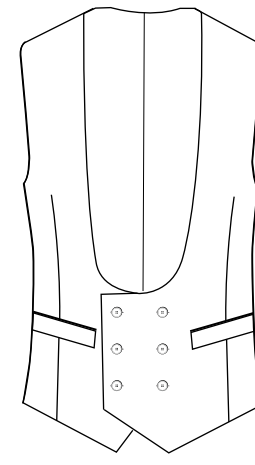
You can now add lapels to your waistcoat. Choose from a notch, peak or shawl lapel.

## HORSESHOE OPENING OPTIONS



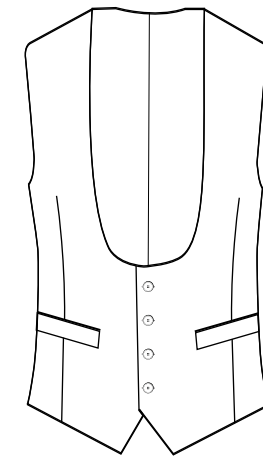
V21

*No opening required*



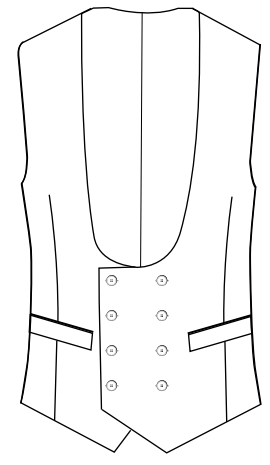
V22

*No opening required*



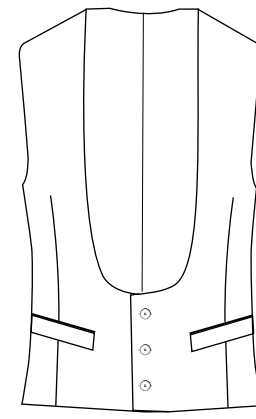
V23

*No opening required*



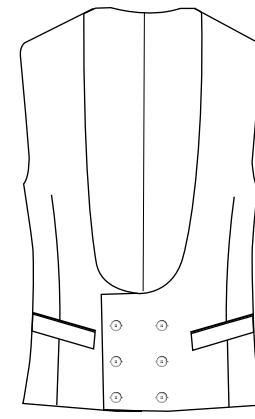
V24

*No opening required*



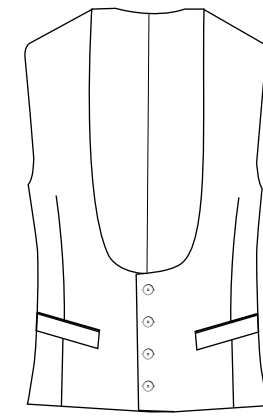
V25

*No opening required*



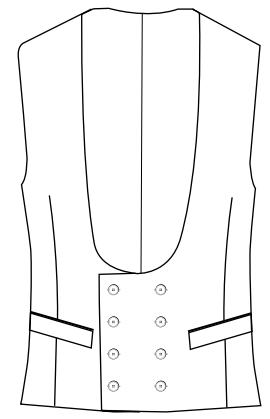
V26

*No opening required*



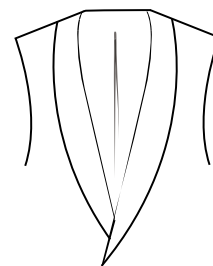
V27

*No opening required*



V28

*No opening required*



### ADD A SHAWL LAPEL

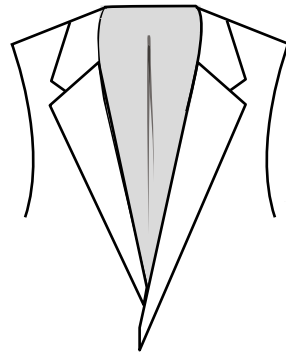
You can now add a shawl lapel to a horse shoe opening waistcoat

### HOW TO MEASURE

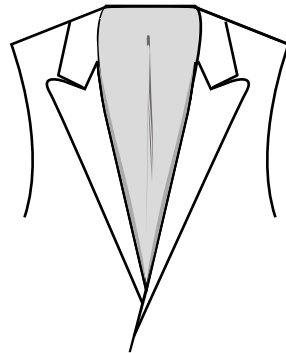
No opening measurement required on any horseshoe opening waistcoat style. All 4 button styles have a 3 inch higher opening.



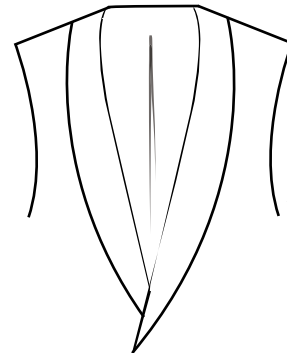
## LAPEL STYLES



Notch Lapel



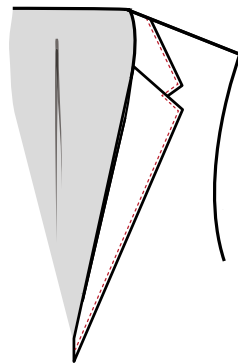
Peak Lapel



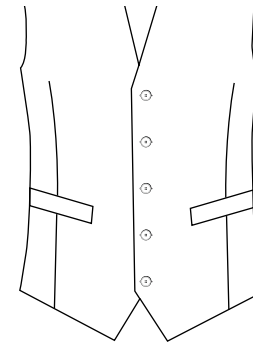
Shawl Collar

## AMF STITCHING

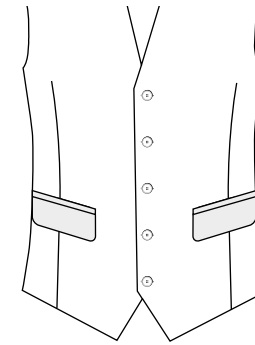
AMF Stitching  
Fronts and Out Pockets  
*Option Plain Edges*



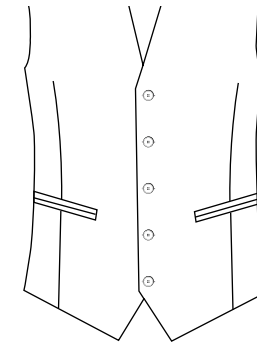
## POCKETS



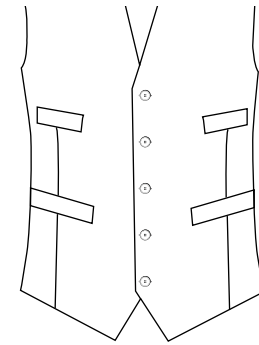
Welt Pockets



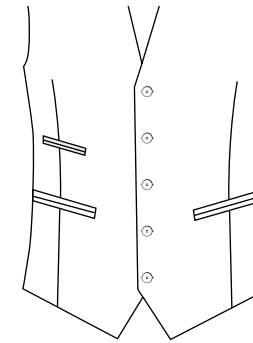
Flap Pockets



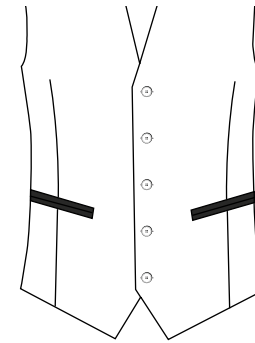
Jetted Pockets



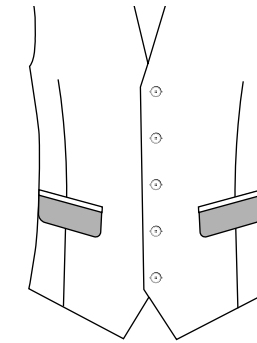
Top & Lower Pockets



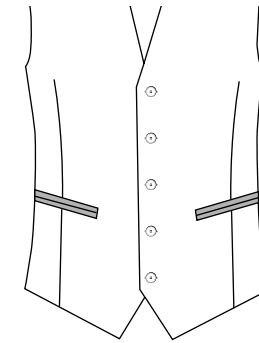
Out Ticket Pocket



Satin Jetted Pockets



Contrast Flap Pockets



Contrast Jetted Pockets

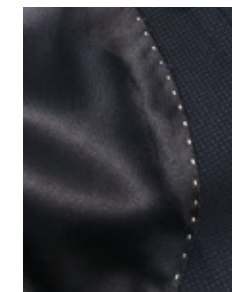
## FEATURES



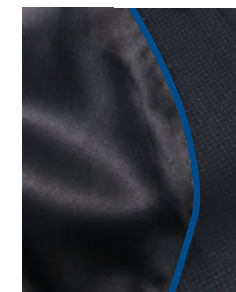
Lining - Option  
Fabric Back



Contrast  
Button Holes



Columbia Stitching  
*Not available on satin lining*



Internal Piping  
on Facing Edge



Chain Hole

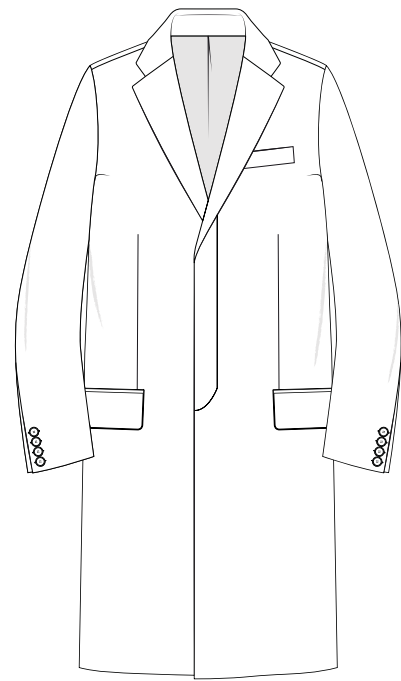


## OVERCOATS

Choose from a range of classic styles from Morning Coats to Frock Coats to Overcoats

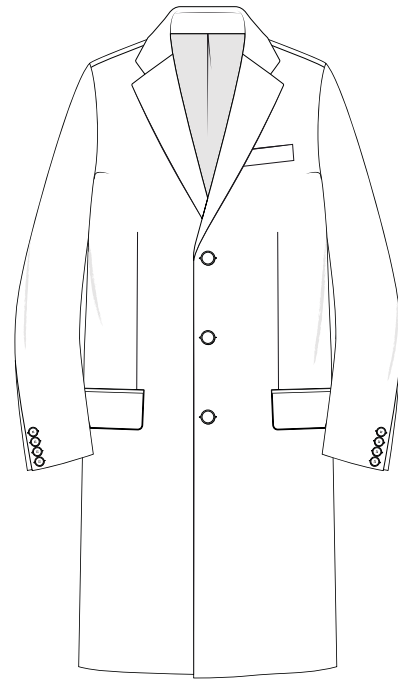
Our coats honour tradition, with tailoring that will stay fashionable for years to come. These pieces embody style, elegance, and sophistication.

# OVERCOATS STYLES



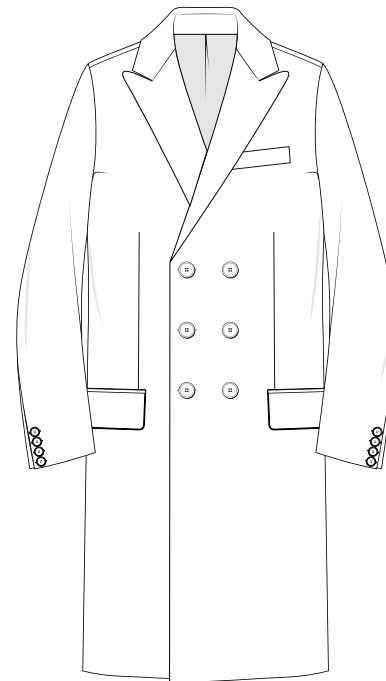
STYLE 722  
Button 3 Fly Front

- Single Breasted
- Button 3
- Fly Front
- Notch Lapels
- Set in Sleeves
- Out Breast Welt Pocket
- Centre Vent Back



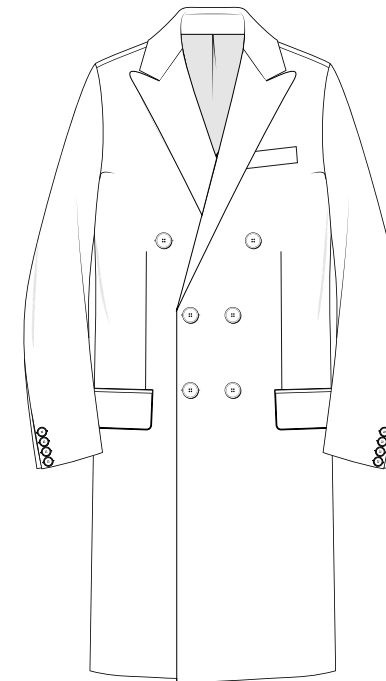
STYLE 723  
Button 3

- Single Breasted
- Button 3
- Notch Lapels
- Set in Sleeves
- Out Breast Welt Pocket
- Centre Vent Back



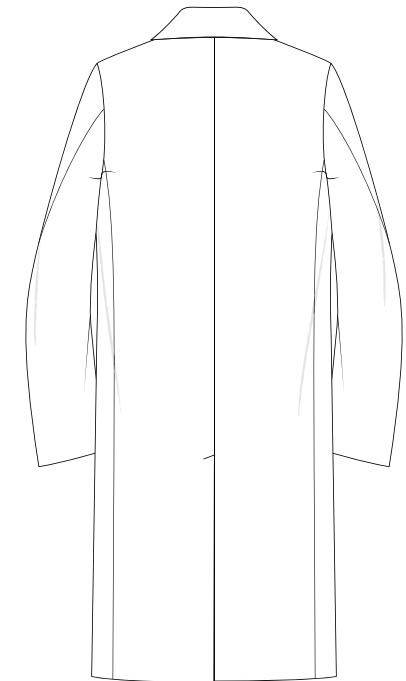
STYLE 726  
Double Breasted  
Button 3 show 3

- Double Breasted
- Button 3 Show 3
- Peak Lapels
- Set in Sleeves
- Out Breast Welt Pocket
- Centre Vent Back



STYLE 728  
Double Breasted  
Button 2 show 3

- Double Breasted
- Button 2 Show 3
- Peak Lapels
- Set in Sleeves
- Out Breast Welt Pocket
- Centre Vent Back



Centre Vent Back  
for all Overcoat Styles



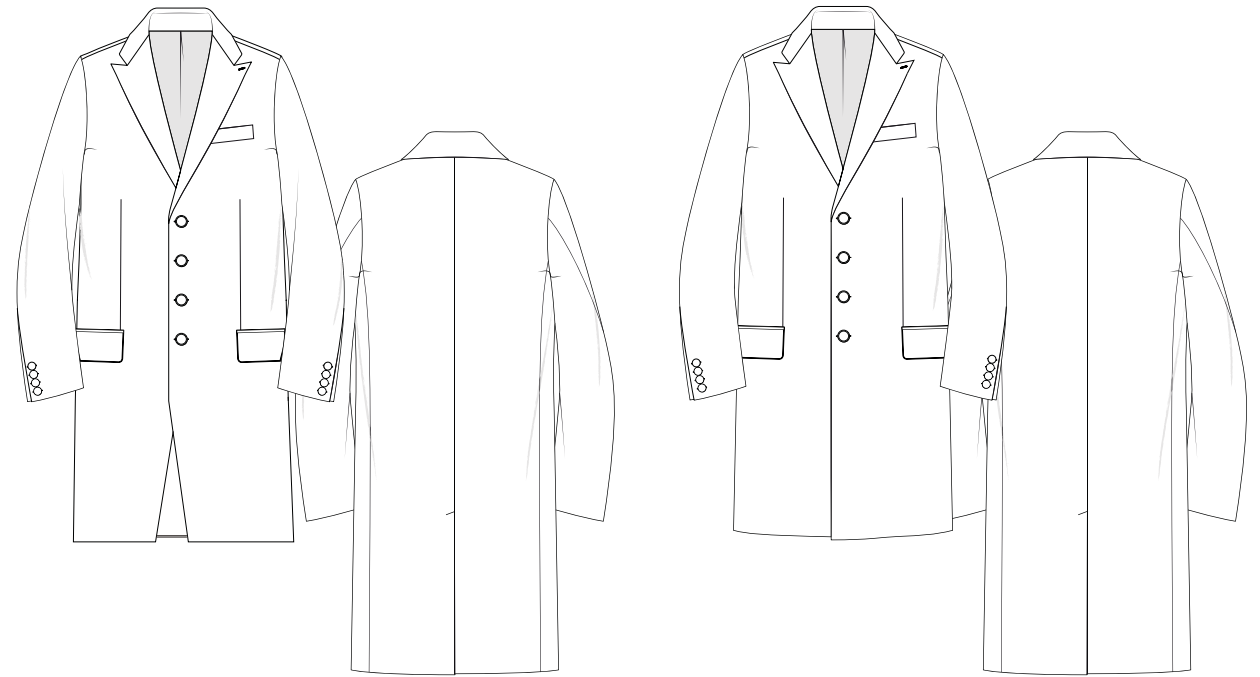
SPECIAL OCCASION  
FROCK COAT



FROCK COAT  
Style 254

Single Breasted	Cloth Buttons
Button 3 Frock Coat	Standard Pattern Length 38"
Straight Facing Only	Recommended (+/- 3") Only
Wide Notch Lapels	Blade Seam Back with Hook Vent to Button 2
Out Breast Welt Pocket	

SPECIAL OCCASION  
PRINCE EDWARD LONG COAT STYLES



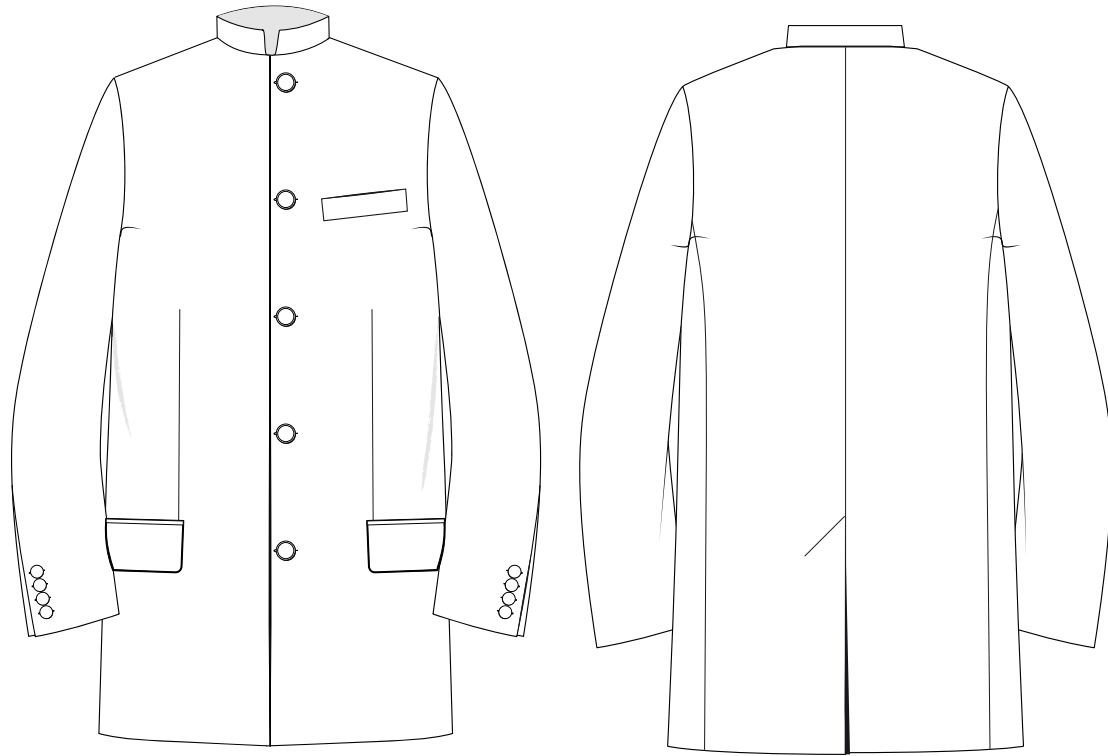
PRINCE EDWARD LONG COAT  
Style 257

Cut Back Fronts	Out Breast Welt Pocket
Single Breasted	Cloth Buttons
Button 4 Frock Coat	Standard Pattern Length 35"
Straight Facing Only	Recommended (+/- 3") Only
Cut Back Fronts	Centre Vent Only
New Semi Peak Lapels	

PRINCE EDWARD LONG COAT  
Style 258

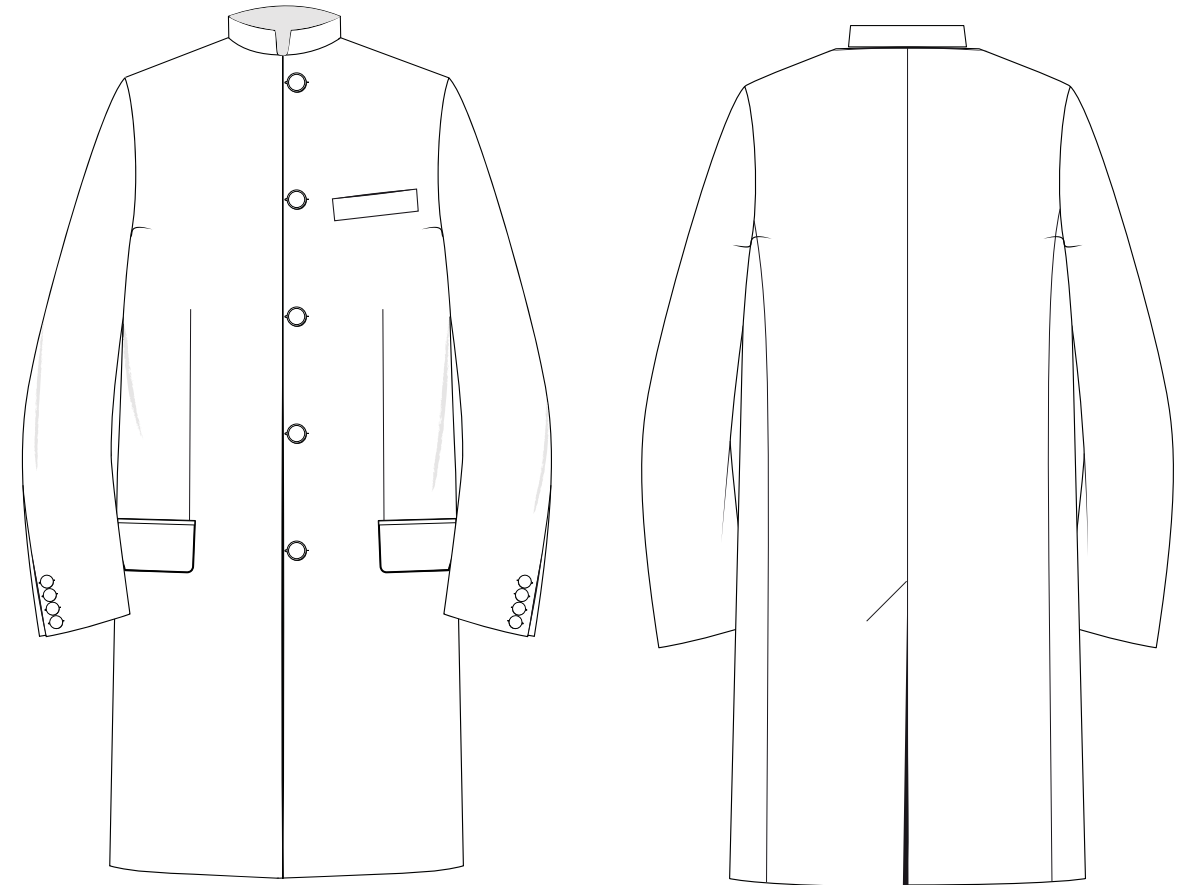
Square Cut Fronts	New Semi Peak Lapels
Single Breasted	Out Breast Welt Pocket
Button 4 Frock Coat	Cloth Buttons
Straight Facing Only	Standard Pattern Length 35"
Square Fronts	Recommended (+/- 3") Only
	Centre Vent Only

SPECIAL OCCASION  
NEHRU COLLAR COATS



NEHRU STAND COLLAR JACKET  
STYLE 47

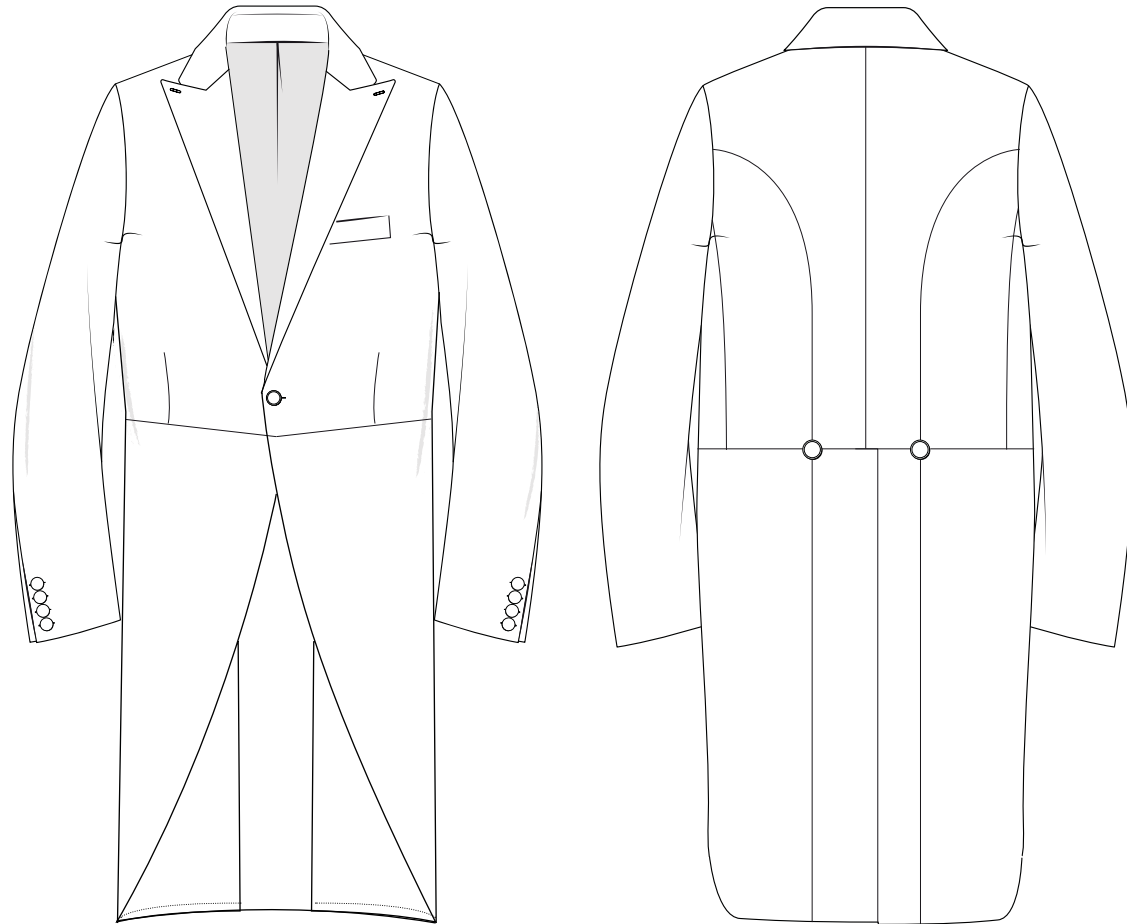
- |                             |                               |
|-----------------------------|-------------------------------|
| <u>Single Breasted</u>      | <u>Nehru Stand Collar</u>     |
| <u>Button 5 Jacket</u>      | <u>Out Breast Welt Pocket</u> |
| <u>Straight Facing Only</u> | <u>Centre Vent Only</u>       |
| <u>Square Fronts</u>        |                               |



NEHRU STAND COLLAR FROCK COAT  
STYLE 256

- |                             |   |
|-----------------------------|---|
| <u>Single Breasted</u>      | <u>Nehru Stand Collar</u>   |
| <u>Button 5 Frock Coat</u>  | <u>Out Breast Welt Pocket</u>   |
| <u>Straight Facing Only</u> | <u>Centre Vent Only</u>   |
| <u>Square Fronts</u>        | <u>Standard Pattern Length 38"</u><br><u>Recommended (+/-3") Only</u> |

SPECIAL OCCASION  
MORNING COAT

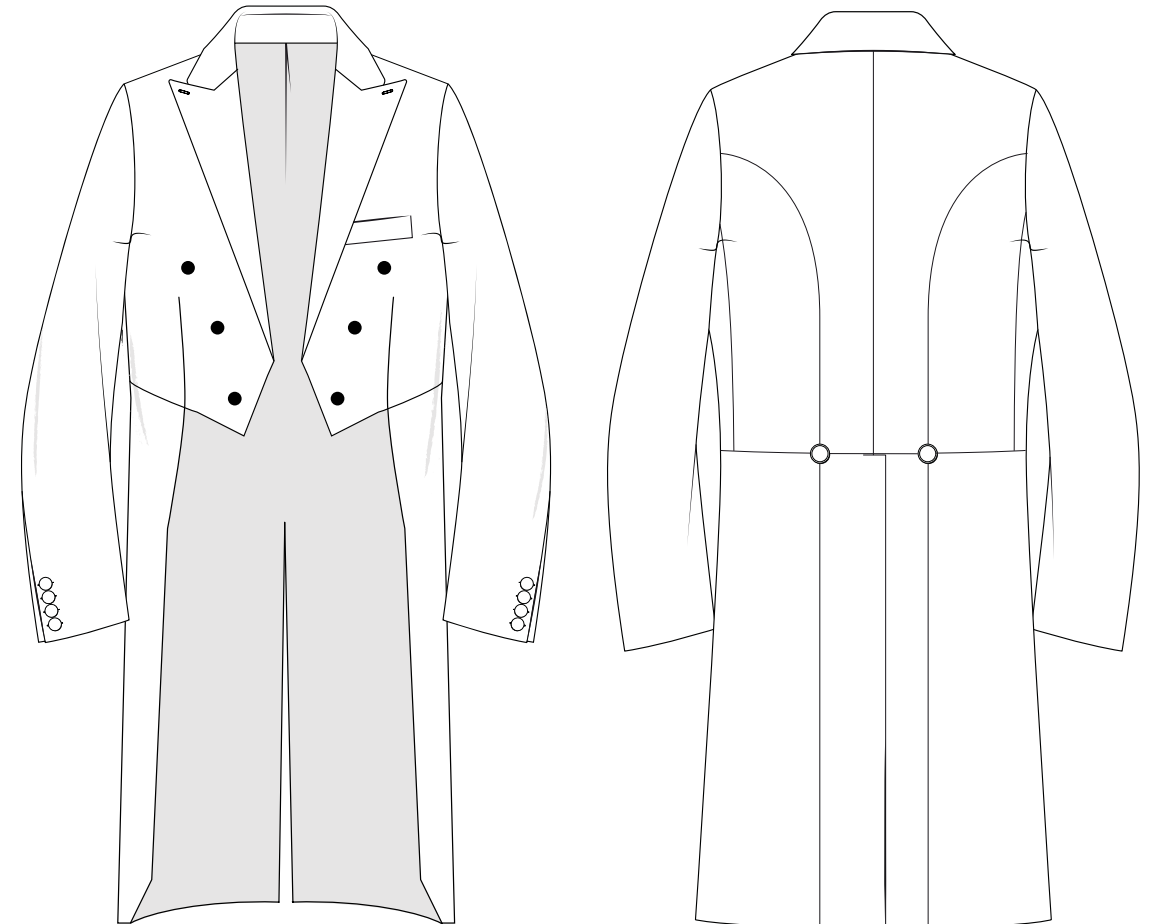


MORNING COAT  
Style 12  
*Link button option available*

4 Inch Peak Lapel  
Outbreast Welt  
One Button Fastening  
4 Button Sham Cuff ONLY

Waist Seam all around  
Hook Vent with 2 Buttons  
2 Lapel Holes - One Each Side

SPECIAL OCCASION  
EVENING TAIL COAT



EVENING DRESS COAT  
Style 15  
*With or without satin lapel*

4 Inch Peak Lapel  
Outbreast Welt  
3 Show 3 Buttons  
4 Button Sham Cuff ONLY

Waist Seam all around  
Hook Vent with 2 Buttons  
2 Lapel Holes - One Each Side



# COUNTRY AND HIGHLAND WEAR

Our garments are at the forefront of  
country life with tailoring designed to  
be worn for a lifetime.

## COUNTY JACKET

The below is the standard jacket specification  
and is the starting point for your garment.



SB2

2CJ

SB3

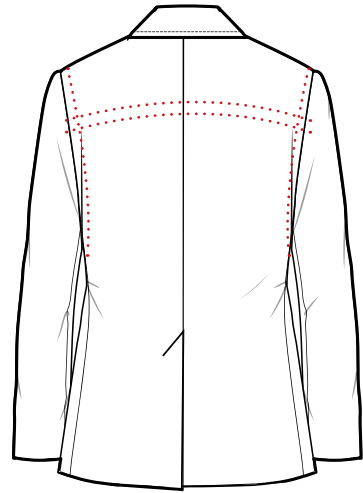
7CJ

SB4

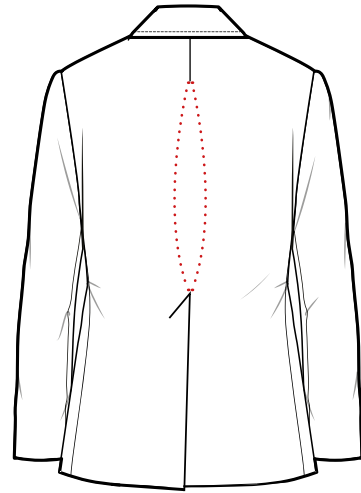
4CJ



## BACK STYLE OPTIONS

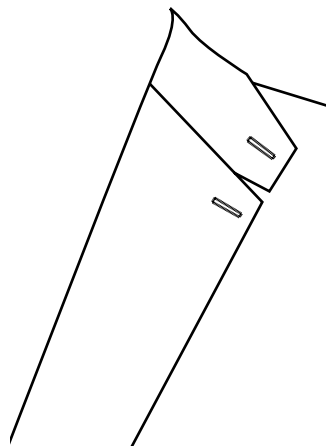


Action Shoulders with  
Internal Elastic

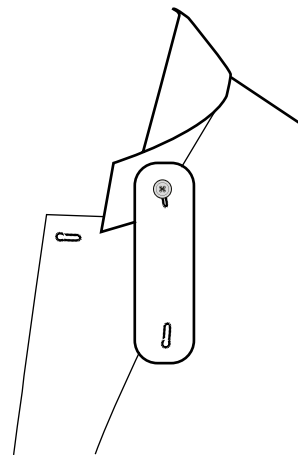


Action Back with  
Inverted Pleat

## STORM COLLAR OPTIONS



Tab Collar  
Grown on Tab & Button  
*Only available on notch lapels*



Detachable Storm Collar



**ACTION SHOULDERS**  
Designed to ensure you have  
movement throughout your day.



**INTERNAL POCKET OPTIONS**  
- Right In-Breast Triangle Tab & Button.  
- Left In-Breast Jet onto Lining.  
- Hare Pocket.



**POCKETS**  
Bellows with flap (as shown) choice of  
6cm or 9cm deep pocket flap. Optional  
additional button to hold flap open.



**GUN PATCH**  
Choose from our Alcantara selection



**HALF BELT**  
Sewn on half belt- available on action  
shoulders & pleated back



COUNTRY WEAR  
PLUS TWOS



The below is the standard specification and is the starting point for your garment.

Plain Fronts as Standard

Pointed Extension Waistband with Hole and Button

Belt Loops & Slant Side Pockets with 1 Back Hip Pocket

Zip Fly & French Bearer

Velcro below the Knee Fastening

Fully Lined Front & Back

COUNTRY WEAR  
PLUS FOURS



The below is the standard specification and is the starting point for your garment.

Single Reverse Pleat as Standard

Pointed Extension Waistband with Hole and Button

Belt Loops & Slant Side Pockets with 1 Back Hip Pocket

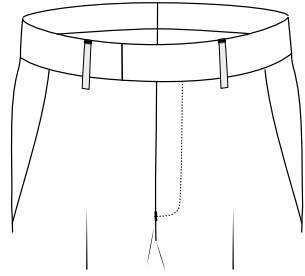
Zip Fly & French Bearer

Velcro below the Knee Fastening

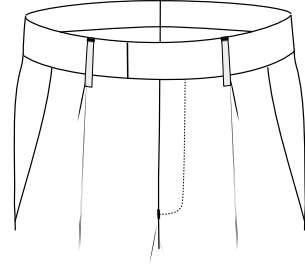
Fully Lined Front & Back



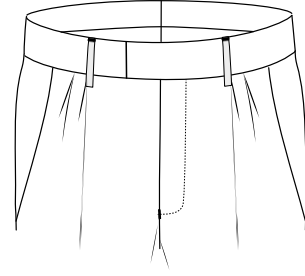
## PLEATS



Plain Fronts  
*Standard on Plus 2*

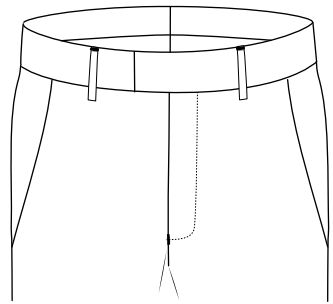


Single Reverse Pleat  
*Standard on Plus 4*  
*Option Forward Pleat*

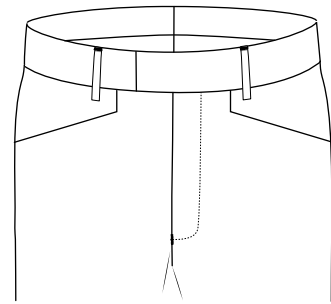


Double Reverse Pleats  
*Option Forward Pleats*

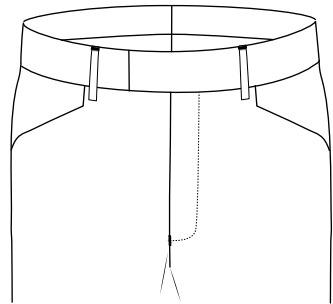
## POCKETS



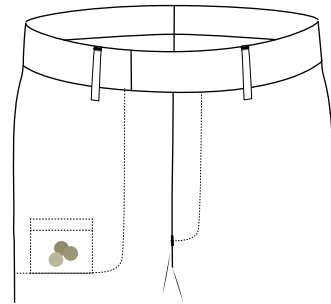
Slant Side Pocket



Dropped Welted Cross Pocket  
Plain Front Only

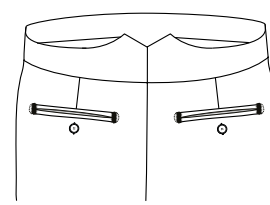


Frog Mouth Side Pocket  
Plain Fronts Only

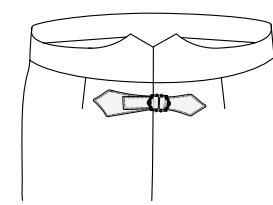


Right Side Internal Coin Pocket

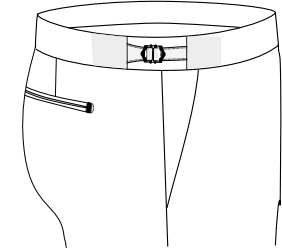
## WAISTBAND



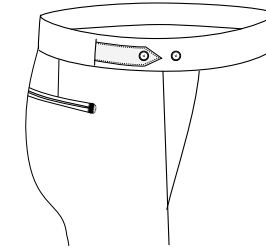
Peak Back Waistband



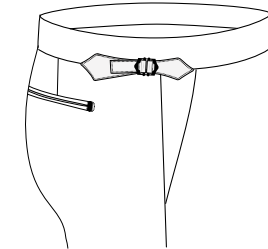
Peak Back with Strap  
and Buckle



Strap & Buckle  
Adjusters into waistband

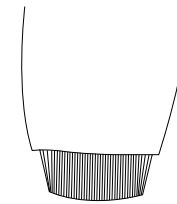


Tab & Button Elastic  
Side Adjusters

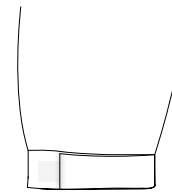


Pointed Strap & Buckle  
with overlapping adjuster

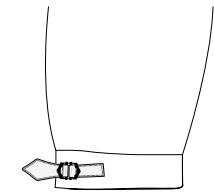
## BELOW THE KNEE FASTENING



Knitted Cuff



Velcro  
*Standard*



Leather Strap & Buckle

COUNTRY WEAR

# GILET

The below is the standard specification and is the starting point for your garment.



1CG  
V Neck Gilet  
Four Button Front



1CGZ  
Zip Fastening



1CGN  
Nehru Collar Gilet  
Six Button Front



**ADD ON A GUN PATCH**  
Choose from our Alcantara selection.  
*Options left, right or both.*

### Measuring your Gilet length

Place the tape at the nape of neck and bring around tight against the collar and down to the length required.

*Please note:*  
Do not state a back length measurement (i.e. as requested for a jacket length) if you do your garment will be too short.

## POCKET STYLE OPTIONS



Half Moon Bellows Pocket  
*Standard*



Bellows Pocket with flap  
*Bellows with flap choice of 6cm or 9cm deep pocket flap. Optional additional button to hold flap open.*



Welted Pocket



Handwarmer Pocket

## BACK STYLE OPTIONS



Standard Plain Back



Half Belt



Half Belt with Button & Tab



Button & Tab

# KILT JACKETS AND WAISTCOAT



KILT JACKET — 6KJ

A 1 Button Jacket, with 3 Button Shams and Flap Pockets



KILT JACKET — 2KJ

A 2 Button Jacket, with 3 Button Shams and Flap Pockets



STANDARD BACK OF KILT JACKET

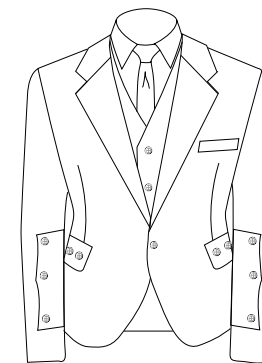


WAISTCOAT — KV1

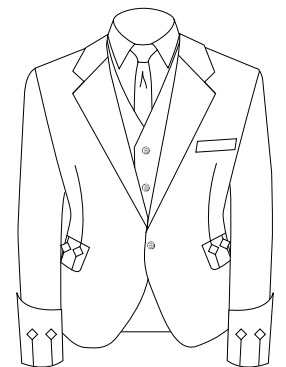
5 Button Front

## ADD ON CRAIL OR ARGYLL DETAILS

Add Crail or Argyll Sleeves and Pockets to your Kilt Jacket



CRAIL



ARGYLL





# HUNT COATS



**GRAFTON**  
Traditional Mens Hunt Coat

- Waterproof Skirt Lining
- Wool Tattersall Upper Lining
- 2 X Lining In-Breast Pockets
- 2 X Lower Inside Pockets
- Two Buttons on the back of the Coat
- Three, Four and Five Button Front Option
- Whistle Pocket Inserted into External Waist Seam
- Wind Cuffs

**CHARGEABLE OPTIONS**

- Seat Flap
- Glove Pockets (1 or 2)



**LEDBURY**  
Traditional Ladies Hunt Coat

- Waterproof Skirt Lining
- Wool Tattersall Upper Lining
- Right Side Lower Inside Pocket
- Two Buttons on The Back Of The Coat
- Three, Four and Five Button Front Option
- Whistle Pocket Inserted into External Waist Seam
- Wind Cuffs

**CHARGEABLE OPTIONS**

- Seat Flap
- Glove Pockets (1 or 2)



## FABRIC AND COLOURS

32OZ Traditional Wool Cavalry Twill  
*(Cut Make and Trim Service Available)*



SCARLET  
1082



BURGUNDY  
1085



BLACK  
1080



GREEN MELANGE  
1088



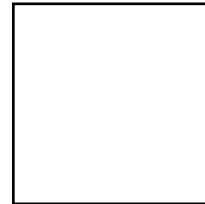
DARK GREEN  
1083



KEEPERS TWEED  
1072



NAVY  
1081



CUT, MAKE &  
TRIM OPTION  
AVAILABLE

### WATER RESISTANT SKIRT LINING

The water resistant internal skirt protects the wool cloth from the elements hunting on a cold, wet winters day.

### WIND CUFFS

A tight-fitting inner cuff which prevents rain or wind from getting inside the coat during the colder months.

### WOOL TATTERSALL LINING

Traditional wool checked Tattersall sourced from the finest UK mills.



# HUNT WAISTCOAT

The waistcoats are traditionally styled and finished to the highest standard. Each waistcoat is tailored to provide the perfect fit.



## FABRIC AND COLOURS

DERBY  
Mens Waistcoat

- Two Bottom Flap Pockets
- Five Brass Buttons
- Back Strap and Buckle

YORK  
Ladies Waistcoat

- Two Bottom Flap Pockets
- Five Brass Buttons
- Back Strap and Buckle



1060  
Red



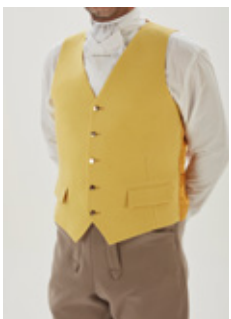
1066  
Mustard, Green  
& Red Check



1063  
Red & Black Check



1065  
Navy & Yellow  
Check



1061  
Yellow



MADE IN ENGLAND BY WILHELM KÖNIG

WILHELM KÖNIG  
SUPER 120'S WOOL AND

*Made To Measure* —  
Unique to you